



COLUMBIA/ BOONE COUNTY HEALTH ASSESSMENT

revised may 2011

**Columbia/Boone
County Department
of Public Health and
Human Services**



Boone County Health Assessment

**Produced by
Columbia-Boone County Public Health and Human Services
May, 2011**

Introduction and Overview

The information contained in this report was compiled from a number of public sources of information. Many of the charts and graphs were generated by the Missouri Association for Community Action Comprehensive Community Needs Assessment. In some cases this assessment presents in addition to Boone, a comparative overview of the surrounding counties of Audrain, Callaway, Cole, Cooper, Howard, Moniteau, and Osage area.

Table of Contents

BOONE COUNTY PROFILE.....	1
<i>Percent Attaining Educational Levels.....</i>	<i>1</i>
<i>The number of persons receiving Temporary Assistance for Needy Families.....</i>	<i>3</i>
<i>Aggravated Assaults.....</i>	<i>5</i>
ENVIRONMENTAL HEALTH.....	6
WOMEN AND CHILDREN’S HEALTH.....	7
<i>Indicators of Child Well-being.....</i>	<i>7</i>
<i>Childhood Emergency Room Visits by Race.....</i>	<i>8</i>
<i>WIC Children Ages 24 to 59 Months Overweight.....</i>	<i>9</i>
<i>Under Age 18: Emergency Room Visits for Asthma.....</i>	<i>9</i>
<i>Low Birth Weight.....</i>	<i>10</i>
<i>Inadequate Prenatal Care.....</i>	<i>11</i>
<i>Women Participating in WIC.....</i>	<i>11</i>
ADOLESCENT HEALTH.....	14
SOURCE:.....	14
ADULT HEALTH INDICATORS.....	15
<i>ER Visit Rates for Boone County Residents: Diabetes Mellitus.....</i>	<i>16</i>
<i>Heart Disease Profile for Hospitalization Rates.....</i>	<i>17</i>
<i>ER Visit Rates for Diabetes.....</i>	<i>19</i>
MINORITY HEALTH.....	22
<i>Inadequate Prenatal Care.....</i>	<i>22</i>
<i>ER Visits: All Injuries.....</i>	<i>22</i>
<i>ER Visits: Alcohol/Drug Abuse.....</i>	<i>23</i>
<i>ER Visits: Asthma.....</i>	<i>23</i>
<i>Boone County ER Visit Rates: Heart disease by Race.....</i>	<i>24</i>
<i>ER Visits: Diabetes Mellitus.....</i>	<i>24</i>
<i>ER Visits: Epilepsy.....</i>	<i>25</i>
<i>ER Visits: Hypertension.....</i>	<i>26</i>
SENIORS HEALTH CONCERNS.....	28
<i>Seniors in Poverty, 2000 - 2005/2007.....</i>	<i>29</i>
ANALYSIS OF COMMUNICABLE DISEASE RATES.....	32
<i>Boone County’s sexually transmitted diseases.....</i>	<i>32</i>
<i>ER: 3-Year Average Rates for Pneumonia and Influenza.....</i>	<i>32</i>
<i>Hospitalization Profile 3-Year Average Rates for Pneumonia and Influenza.....</i>	<i>33</i>
<i>for Boone County Residents.....</i>	<i>33</i>
ANALYSIS OF CHRONIC DISEASE RATES.....	34
COMMUNITY RESOURCES.....	35
COMMUNITY CAPACITY FOR HEALTH CARE.....	37
ADDITIONAL HEALTH INFORMATION.....	38
QUICK REFERENCE TO INDICATOR RATES.....	38
PRIMARY DATA SOURCES FOR THIS REPORT.....	42
LIST OF ACRONYMS.....	43
RESOURCE AND REFERRAL GUIDE.....	43

Boone County Profile

The 2010 American Community Survey release of annual data shows the estimated population of Boone County as 162,642 and Columbia as 102,324. The charts and information below are taken from the **2005-2009 American Community Survey 5-year estimates**, which is a more accurate representation of the numbers.

Race and Gender Demographics

	Total	M/F (%)	White (%)	Black (%)	Am Indian and Alaskan (%)	Asian (%)
Boone	154,340	48.2/51.8	84.4	7.9	0.4	3.1
Statewide	5,988,927	48.8/51.2	83.9	11.1	0.4	1.4

Source: Missouri Census Data Center <http://mcdc.missouri.edu/>

Age and Demographics for Boone County

Age	Percent
Under 5 years	6.4
Under 18 years	21.4
18 and over	78.6
20 to 44	42.3
45 to 59	17.5
65 and over	9.1

Source: Missouri Census Data Center <http://mcdc.missouri.edu/>

Educational Attainment

The table below shows the distribution of educational attainment levels. Educational attainment is calculated for persons over 25, and is an average for the period from 2005 to 2009.

Percent Attaining Educational Levels

	% No High School Diploma	% High School Only	% Some College	% Bachelors,	% Graduate or Professional
Boone	6.1	23.5	17.5	24.6	20.4

Source: Missouri Census Data Center <http://mcdc.missouri.edu/>

Poverty

Poverty status over the last 12 months for persons whom poverty status is determined 143,412 in Boone County and 5,780,190 in Missouri.

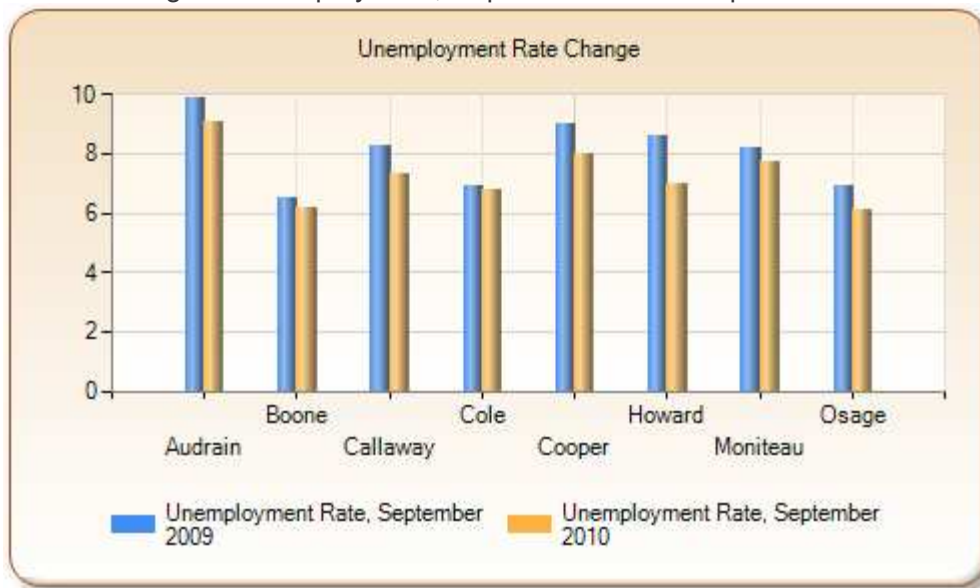
County	All Ages	Age 0-17	Over 18
	Below Poverty	Persons in Poverty	Persons in Poverty
Boone	18.3%	17.4%	24.8%
Statewide	13.8%	19.1%	21.9%

Source: Missouri Census Data Center <http://mcdc.missouri.edu/>

Unemployment Change

Unemployment change within the 8 county report area from September 2009 to September 2010 is shown below. The rate of change for Boone County was -0.3 compared with the statewide rate of change of -0.5.

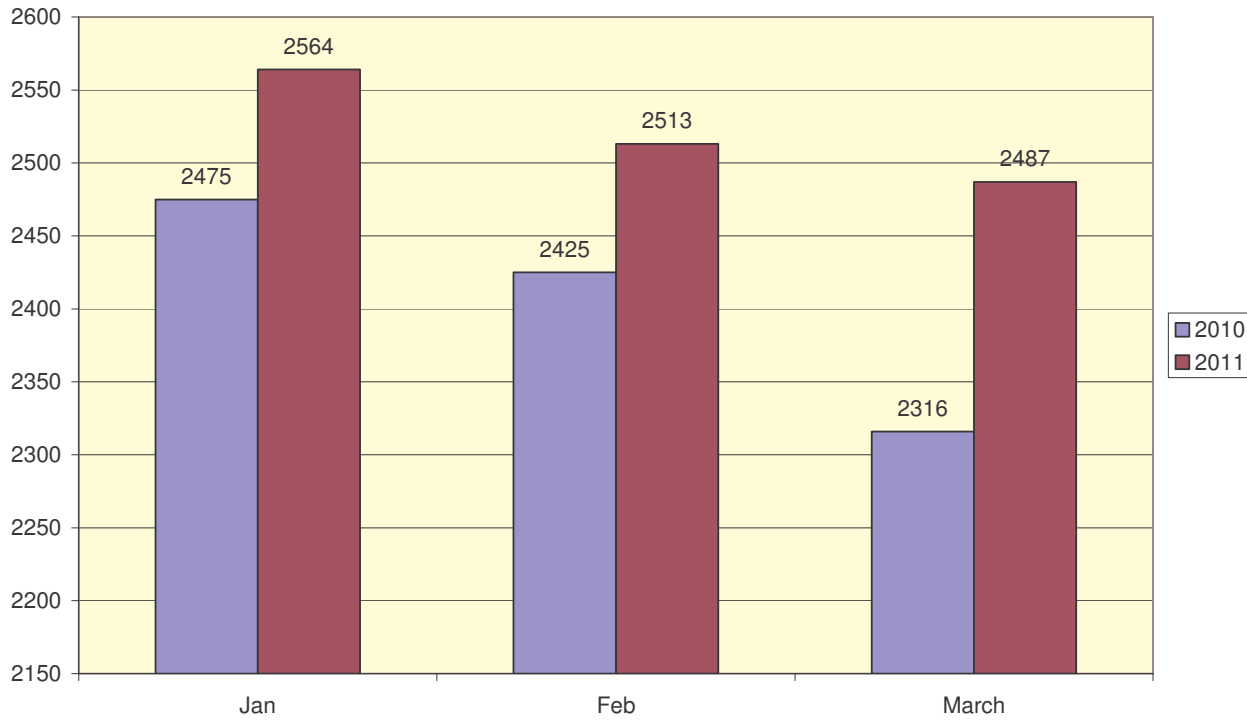
Change in Unemployment, September 2009 - September 2010



Source: U.S. Department of Labor, Bureau of Labor Statistics, Local Area Unemployment Statistics, November 3, 2010.

The number of persons receiving Temporary Assistance for Needy Families (TANF)

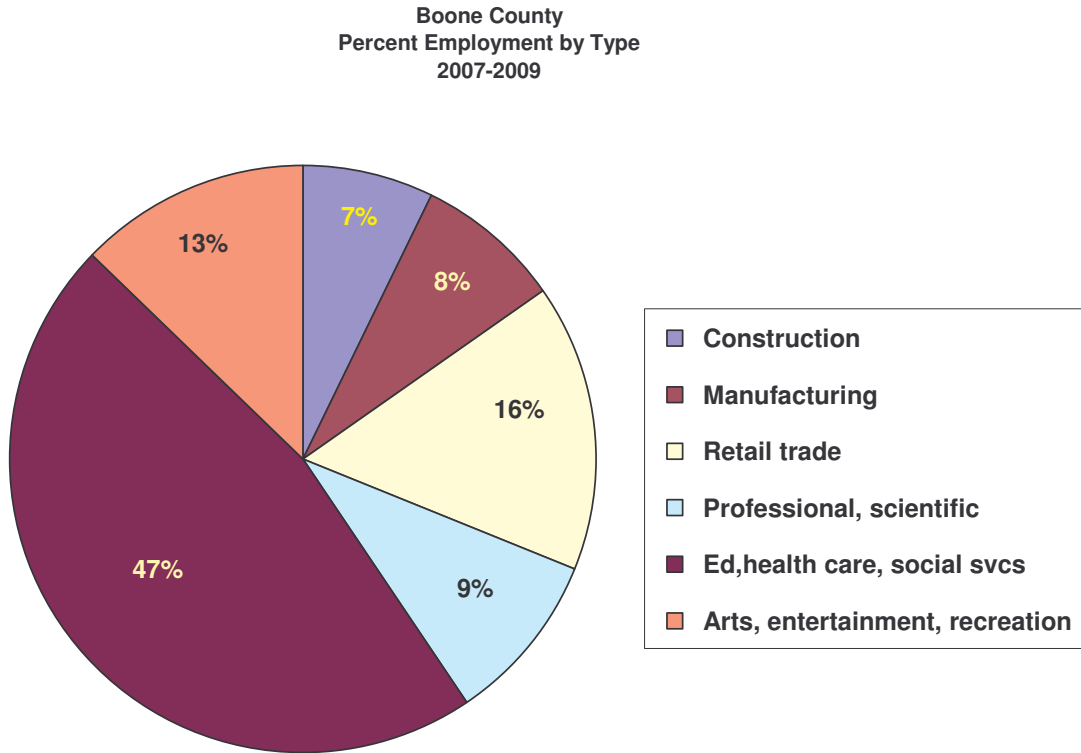
Persons Receiving TANF
Jan-Mar 2010 vs Jan-Mar 2011



Source <http://health.mo.gov/data/mica/mica/tanfp.php>

Employment

A higher percentage of government, academic, and medical jobs is available in Boone County due to the number of hospitals, colleges, and the University of Missouri system headquarters. These types of jobs may contribute to the higher income level seen in Boone County. The location of the University of Missouri, hospitals, and state and federal offices provide regional stability.

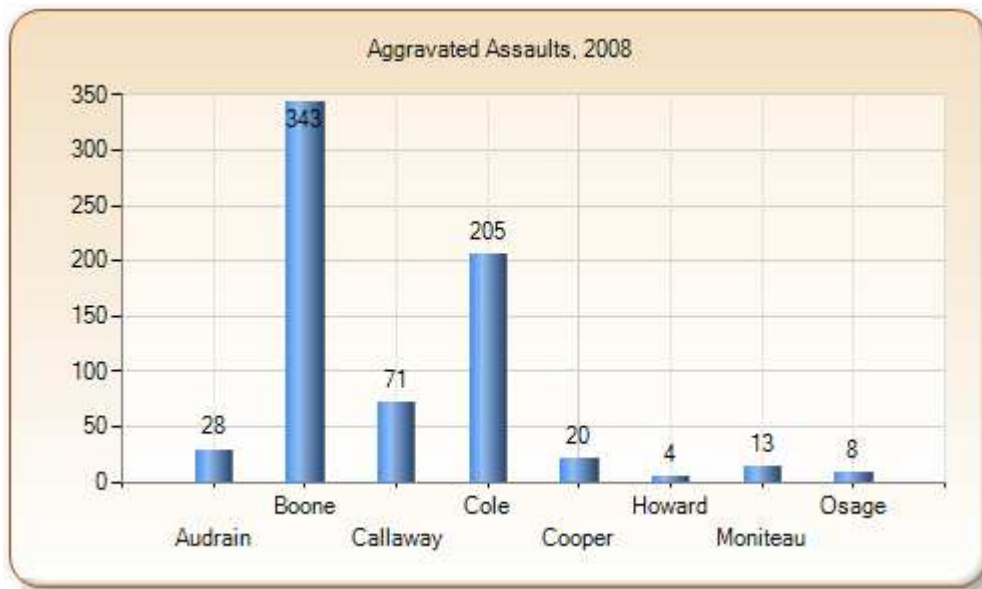


Source: MCDC Demographic Profile 3

Crime

Occurrences of crime within the 8 county report area are shown in the table below, according to the Missouri State Highway Patrol's Uniform Crime Reporting Program.

Aggravated Assaults



Domestic Violence

Domestic Violence incidents are reported whether or not an arrest is made and include any dispute arising between spouses, persons with children in common regardless of whether they reside together, persons related by blood, persons related by marriage, non-married persons currently residing together, and non-married persons who have resided together in the past. Incidents within the 8 county report area ranged from 23 in Howard County, to 1,098 in Boone County in 2008.

Domestic Violence Incidents, 2010

County	Total Reported Incidents
Boone	1,539
Statewide	41,531

Source: Missouri State Highway Patrol, Uniform Crime Reporting (UCR) Program, 2009.

Environmental Health

The Division of Environmental health within Columbia-Boone County Public Health and Human Services monitors compliance with the health and safety codes of the city and county.

Protection by the Numbers

The following table summarizes the number of routine services conducted by Environmental Health

Protection		Number in 2010
Restaurant /food service		
Total inspections		26015
Critical violations		1828
Non-critical violations		3551
Swimming pools inspected		1064
Natural Bathing water tested		60
Notices sent		
Nuisance notices		257
Weed violations		120
Weed abatement complaints		1884
Animal control	City 2010	County 2010
Total Calls	3190	2190
Aggressive animals	73	73 (vicious dog complaints)
Bites to humans	150	102
Dogs impounded	691	342
Cats impounded	138	49

Women and Children's Health

Indicators of Child Well-being

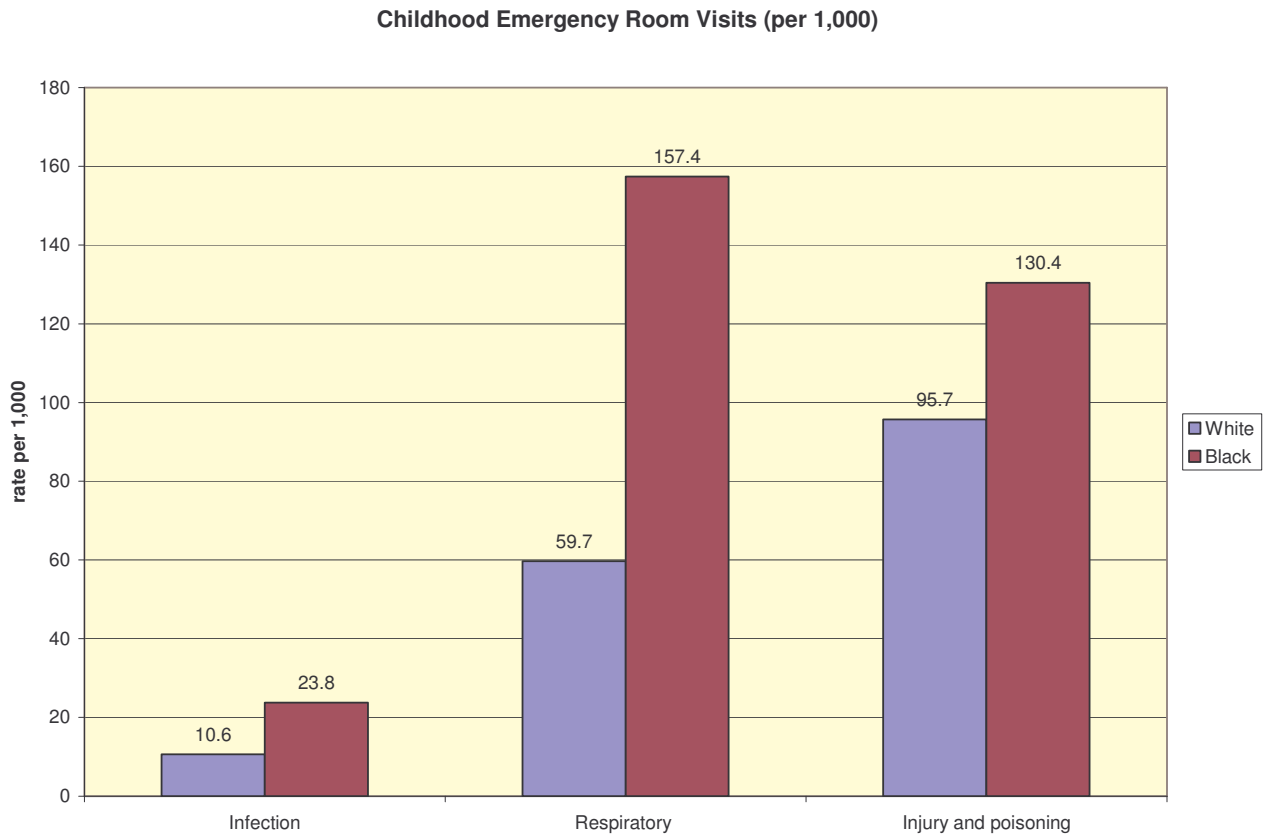
Indicators of child well being include education level of parents, perinatal care, abuse, death and hospitalizations rates, family economic status, and certain crimes. Boone County is compared with Missouri data unless otherwise noted.

Indicators of Child Well-Being			
			Current Year
Percent of students enrolled in free/reduced lunch 2005/2009	MO Boone		43.6 34.1
Percent of births to mothers without h.s. diploma 2005/2009	MO Boone		17.1 10.5
Percent low birthweight infants 2000-2004/2005-2009	MO Boone		8.1 7.4
Infant mortality (per 1,000 live births) 2000-2004/2005-2009	MO Boone		7.3 5.7
Child deaths, ages 1-14 (per 100,000) 2000-2004/2005-2009	MO Boone		19.3 13.2
Child abuse and neglect (per 1,000) 2005/2009	MO Boone		29.8 22.9
Percent annual high school dropouts 2005/2009	MO Boone		3.9 4.0
Births to teens, ages 15-19 (per 1,000) 2005/2009	MO Boone		41.6 21.7
Violent deaths, ages 15-19 (per 100,000) 2000-2004/2005-2009	MO Boone		64.0 43.
Economic Condition of Families			
			Current Year
Percent children in poverty 2000/2008	MO Boone		19.1 17.8
Children under age 6	MO Boone		23.0 19.1
High school graduation rate 2005/2009	MO Boone		85.2 86.8

Health/Mental Health		
		Current Year
Percent children enrolled in MC+/Medicaid 2005/2009	MO	35.0
	Boone	31.5
Percent children with elevated blood lead levels 2005/2009	MO	1.0
	Boone	0.3
Juvenile law violation referrals, ages 10-17 (per 1,000) 2005/2008	MO	55.2
	Boone	88.9

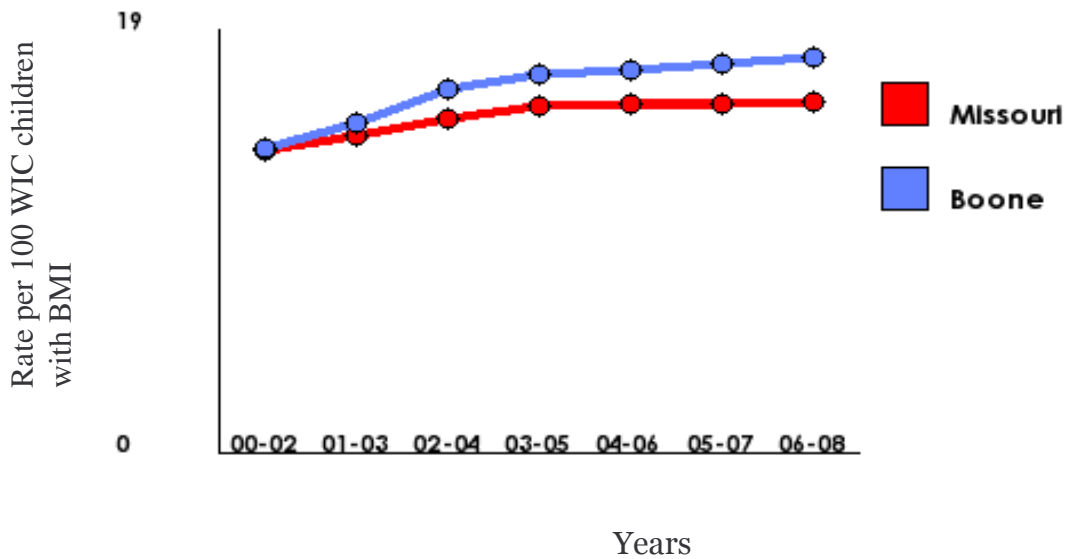
Source: http://mcdc2.missouri.edu/pub/webrepts/kidscent/outcomes_facts/29019.html

Childhood Emergency Room Visits by Race



Source: <http://dhss.mo.gov/data/mica/mica/er.php>

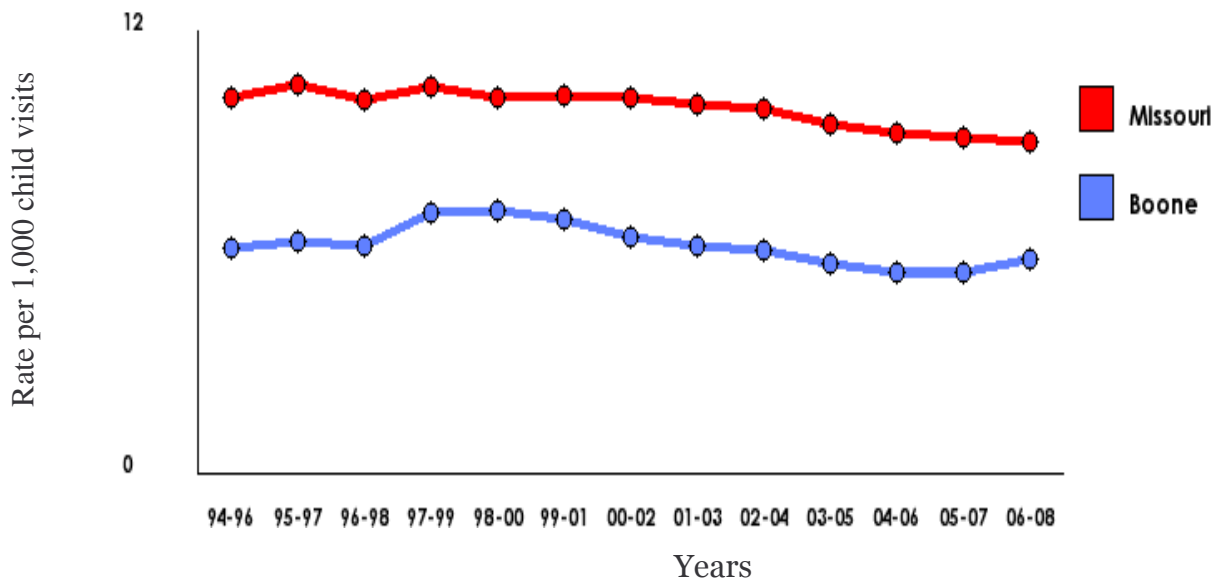
WIC Children Ages 24 to 59 Months Overweight (BMI)
Three-Year Moving Average Rates



- **Boone rate trend shows a statistically significant increase.**
- **Missouri rate trend shows a statistically significant increase.**

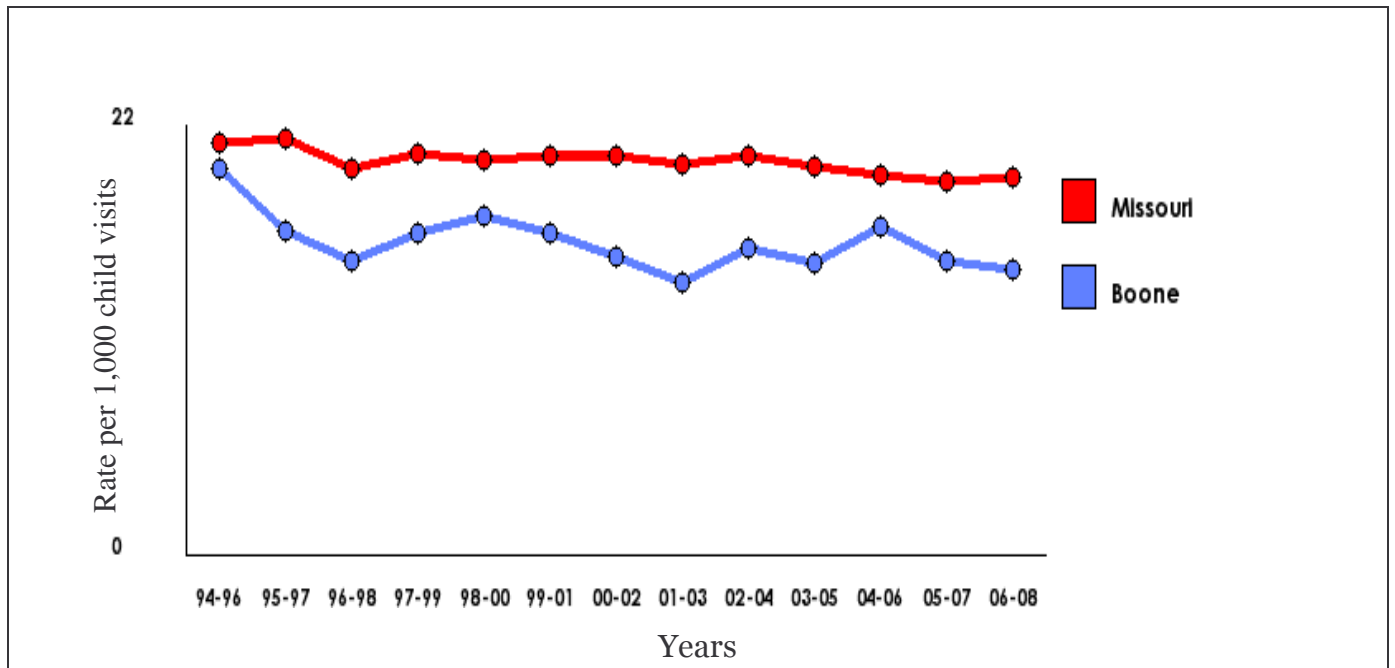
WIC Children Ages 24-59 Months Overweight (BMI) rates are per 100 WIC children with known Body Mass Index status per year.

Under Age 18: Emergency Room Visits for Asthma



- **Boone rate does not show a statistically significant trend .**
- **Missouri rate trend shows a statistically significant decrease.**

Under Age 18: Asthma Hospitalizations



- **Boone rate trend shows a statistically significant decrease.**
- **Missouri rate does not show a statistically significant trend .**

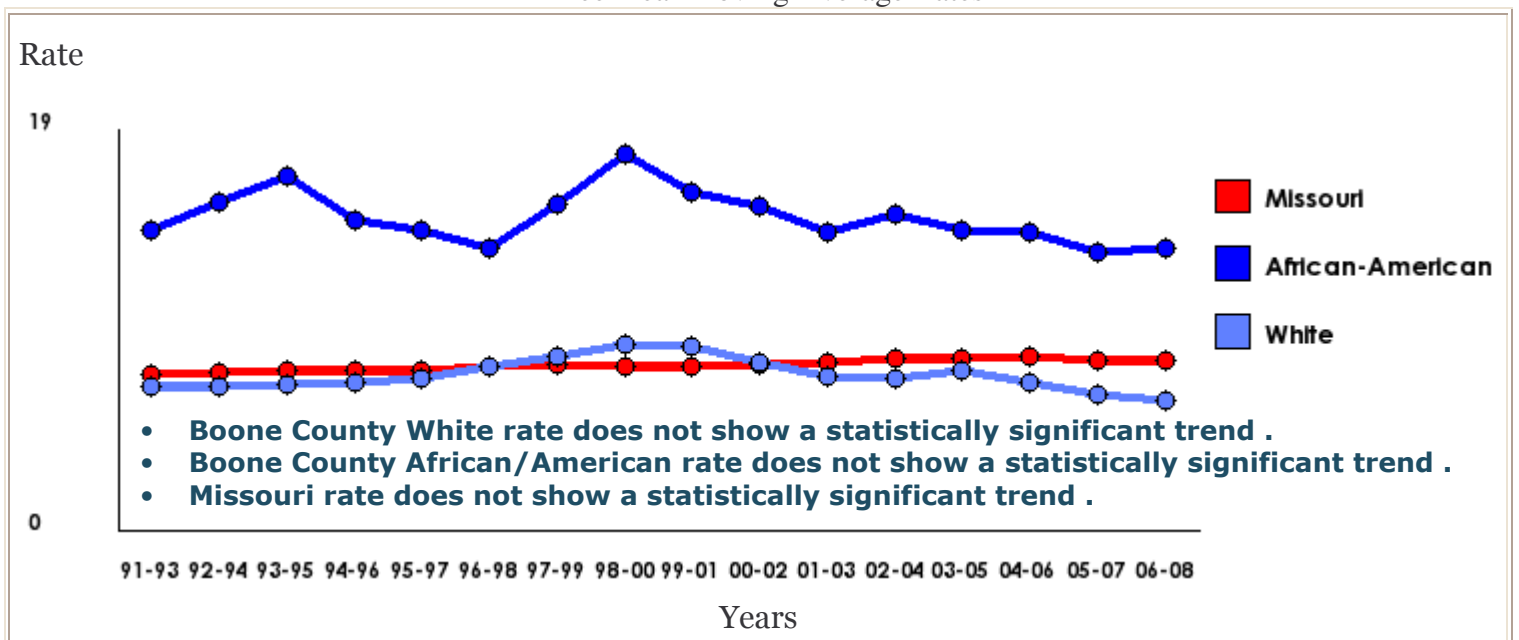
Asthma ER Visit rates are per year per 1,000 specified age population.

Asthma Hospitalization rates are per year per 10,000 specified age population.

Disparities

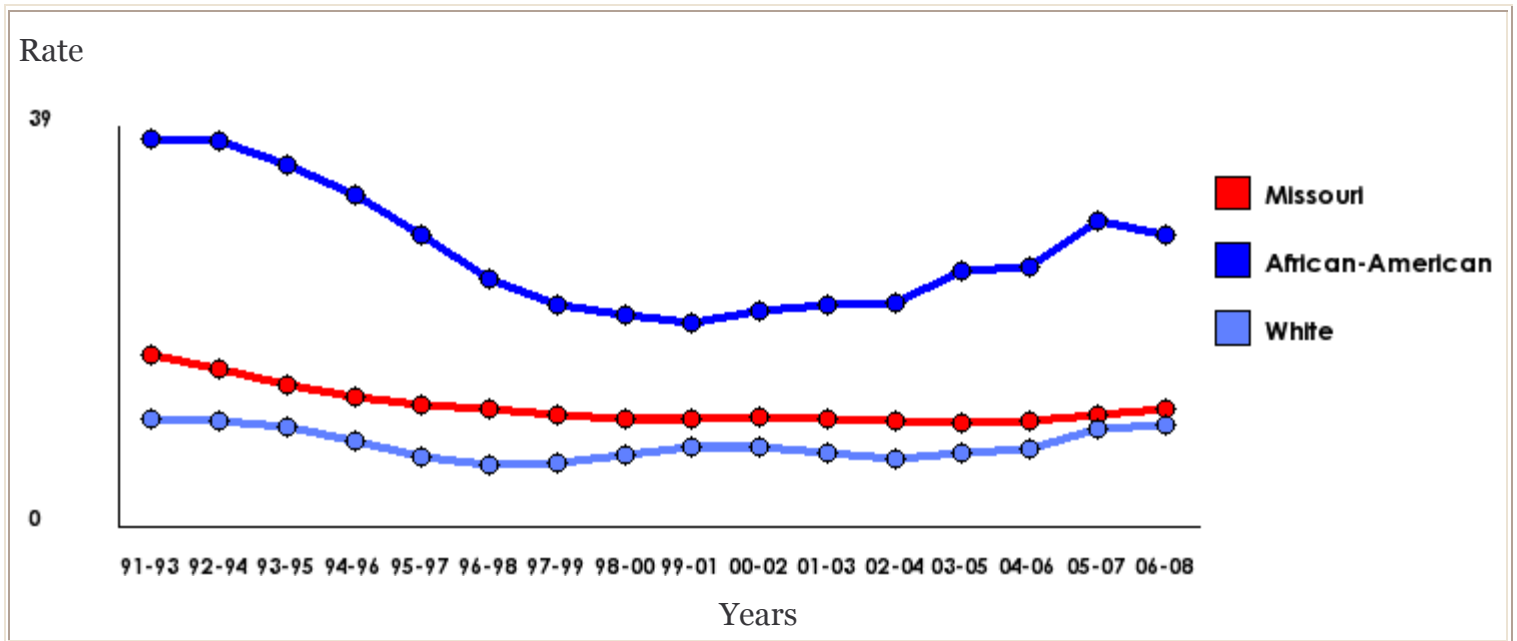
The following charts depict disparities in prenatal risk indicators and in rates for childhood emergency room visits, and childhood hospitalizations.

Low Birth Weight Three-Year Moving Average Rates



- **Boone County White rate does not show a statistically significant trend .**
- **Boone County African/American rate does not show a statistically significant trend .**
- **Missouri rate does not show a statistically significant trend .**

Inadequate Prenatal Care Three-Year Moving Average Rates



- **Boone White rate does not show a statistically significant trend .**
- **Boone African/American rate trend shows a statistically significant decrease.**
- **Missouri rate does not show a statistically significant trend .**

Source: <http://dhss.mo.gov/data/mica/>

Women, Infants, and Children (WIC) Program

Prenatal/Postpartum participation, infant participation and child participation in the WIC program are shown in the table below. The Missouri Department of Health and Senior Services Boone County had the largest number of women (977) receiving WIC benefits, while Howard County had the fewest women (45) receiving WIC benefits.

Women Participating in WIC

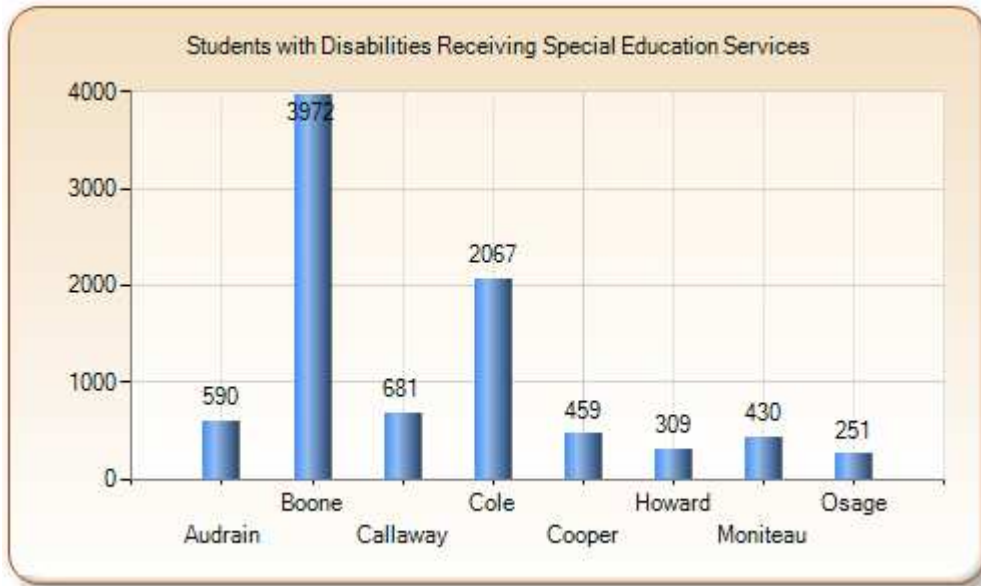
Persons Participating in WIC, 2007

County	Prenatal and/or Postpartum Participation	Infant Participation	Child Participation
Boone	977	933	1,487
Statewide	49,707	46,743	93,266

Source: Missouri Department of Health and Senior Services, Missouri Information for Community Assessment (MICA), Women, Infants, and Children, 2007.

Children with Disabilities Receiving Services

The number of students with disabilities receiving special education services categorized by age in the 8 county report area is shown in the table below. /the Missouri Department of Elementary and Secondary Education reported a range from 251 in Osage County to 3,972 in Boone County.



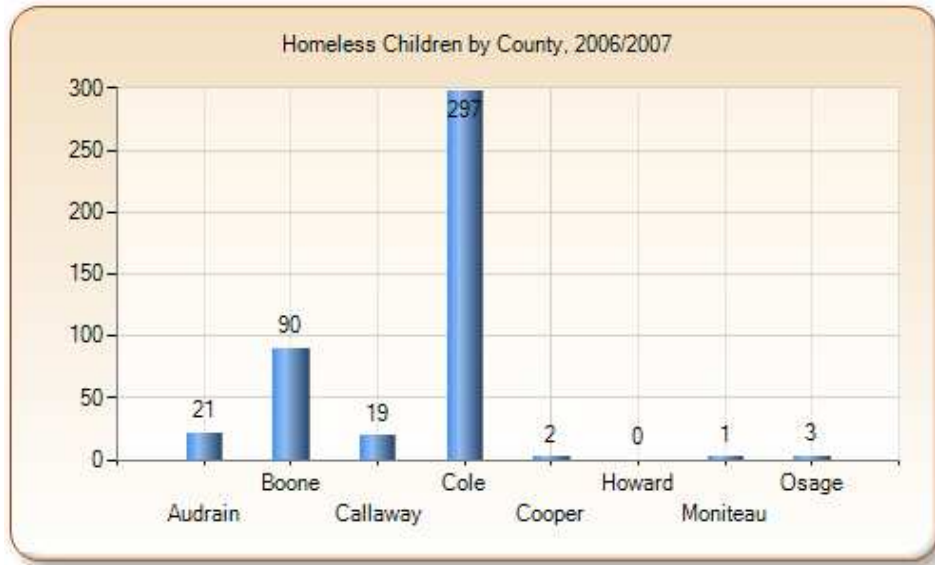
Students with Disabilities Receiving Special Education Services, December 2007

County	Age 3 to Pre-K	Kindergarten - Age 21	Ages 14 - 21	All Ages
Boone	175	2,788	1,009	3,972
Statewide	22,710	232,880	81,510	337,100

Source: Missouri Department of Elementary and Secondary Education, Division of Special Education, Count of Students with Disabilities as of December 1, 2009.

Homeless Children

Homeless children ages 3 through the 12th grade are shown for the 8 county report area.



Source: Missouri Department of Elementary and Secondary Education, School Year 2006-2007 Homeless Census Data.

Adolescent Health

Birth to Teens

Births to Females Age 15 to 19 per 1,000
2005/2009 Average

	Births per 1,000 Teens
Boone	21.7
Statewide	41.6

Source: http://mcdc2.missouri.edu/pub/webrepts/kidscent/outcomes_facts/29019.html

High School Graduation Rate

The number of high school graduates and the graduation rate in the 8 county report area are shown below. According to the Missouri Department of Elementary and Secondary Education The graduation rate for Boone County was 86.3, just slightly above the statewide rate of 85.9%.

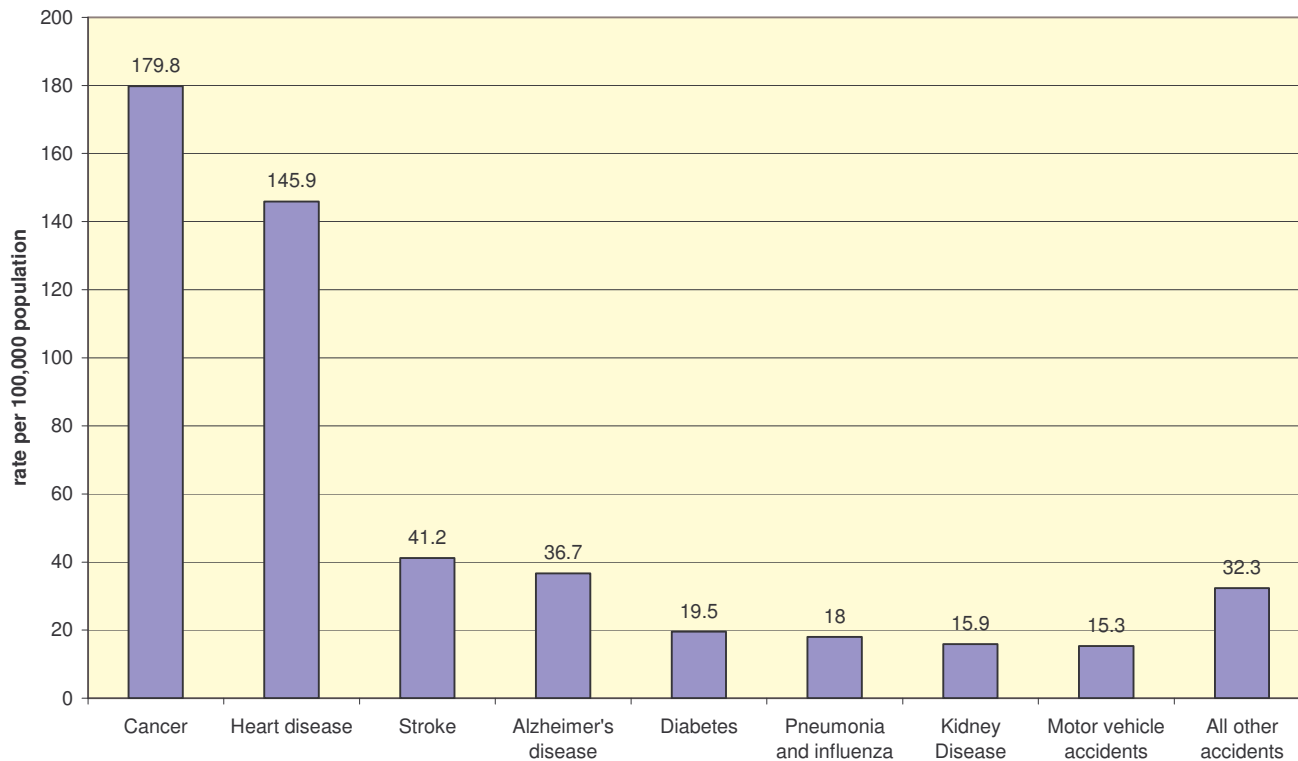
County	Graduates	Graduation Rate
Audrain	269	85.40
Boone	1,591	86.33
Callaway	420	85.19
Cole	809	86.06
Cooper	216	94.32
Howard	111	86.05
Moniteau	168	87.05
Osage	155	93.37
Report Area	3,739	86.79
Statewide	63,888	85.92

Source: Missouri Department of Elementary and Secondary Education, Annual Reporting of School District Data, 2009/2010 Academic Year. Data provided by school district, summarized by DESE school district - county association

Adult Health Indicators

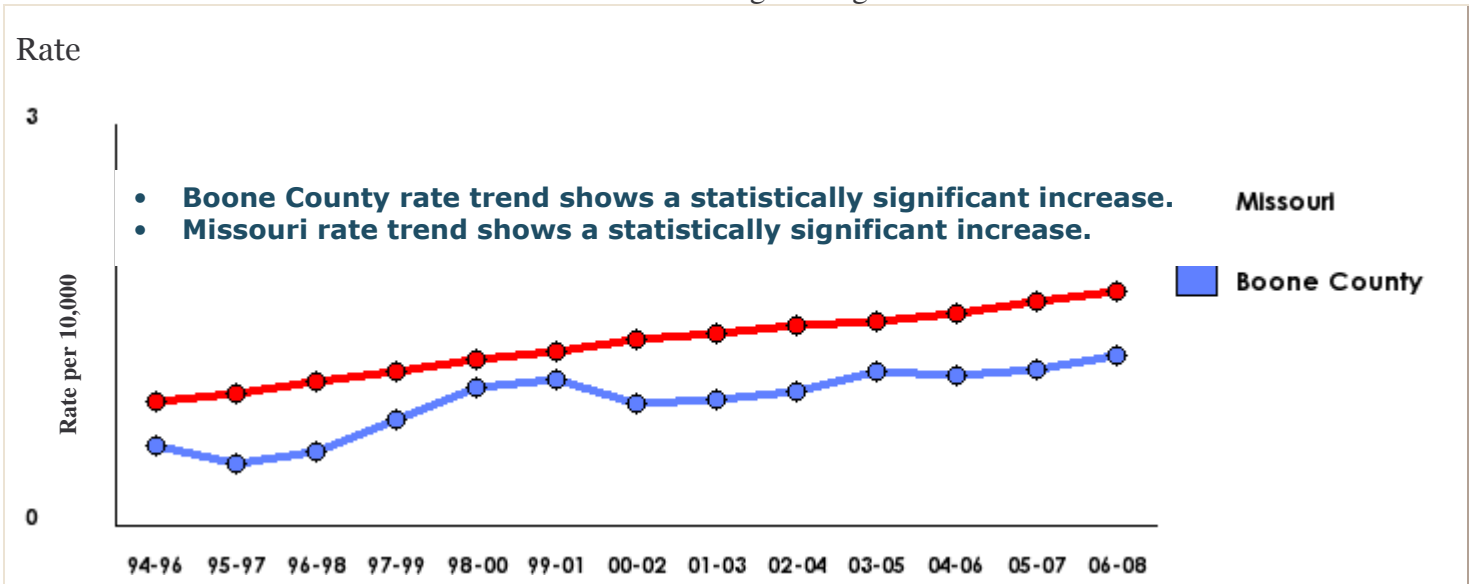
Causes of Death

Causes of Death in Boone County 2009
Rate per 100,000 population



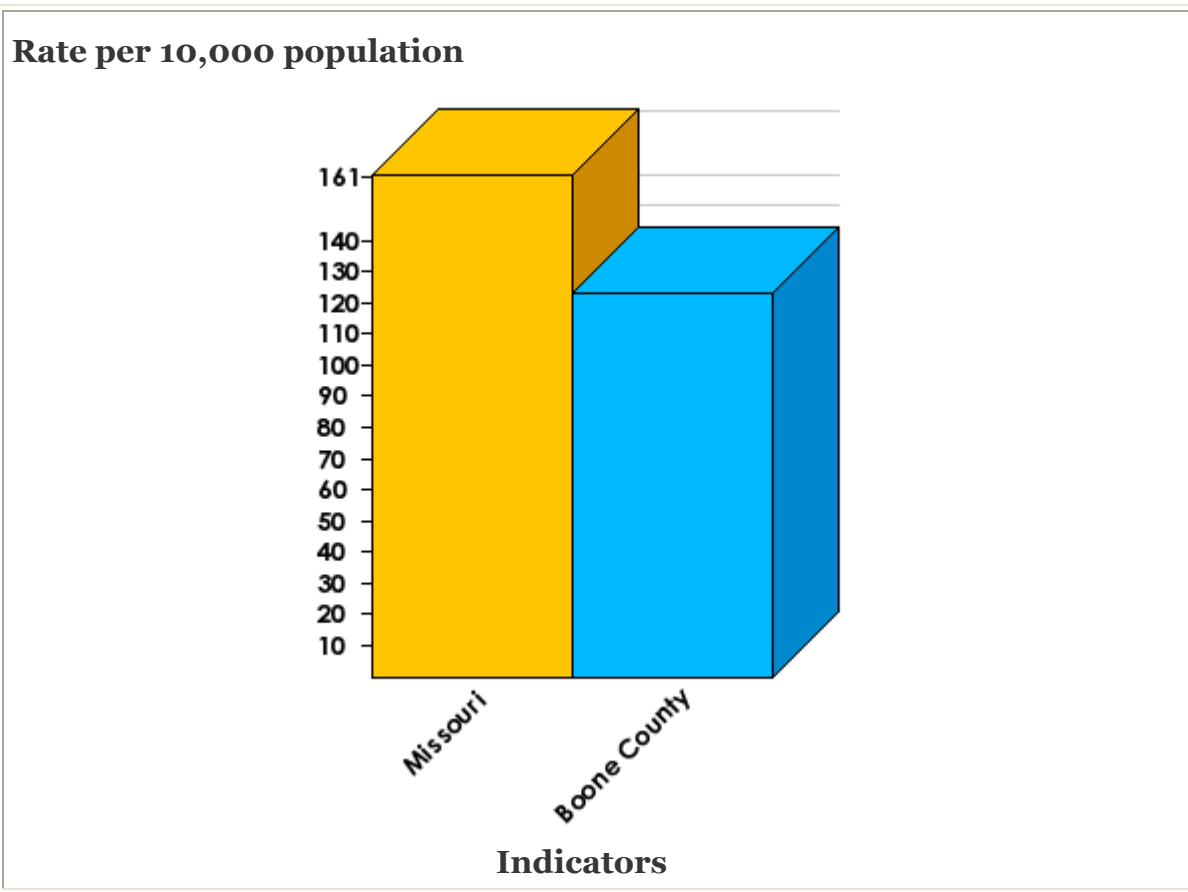
Source: <http://health.mo.gov/data/mica/mica/death.php>

ER Visit Rates for Boone County Residents: Diabetes Mellitus Three-Year Moving Average Rates



Source: www.dhss.mo.gov/mica

Heart Disease Profile for Hospitalization Rates
Missouri and Boone County

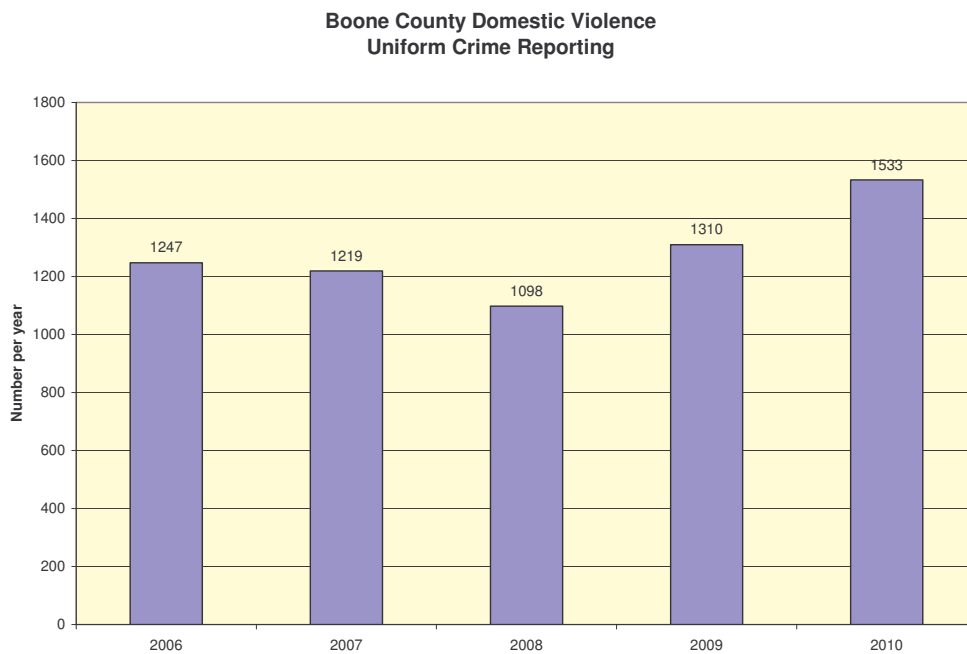


Source: www.dhss.mo.gov/mica

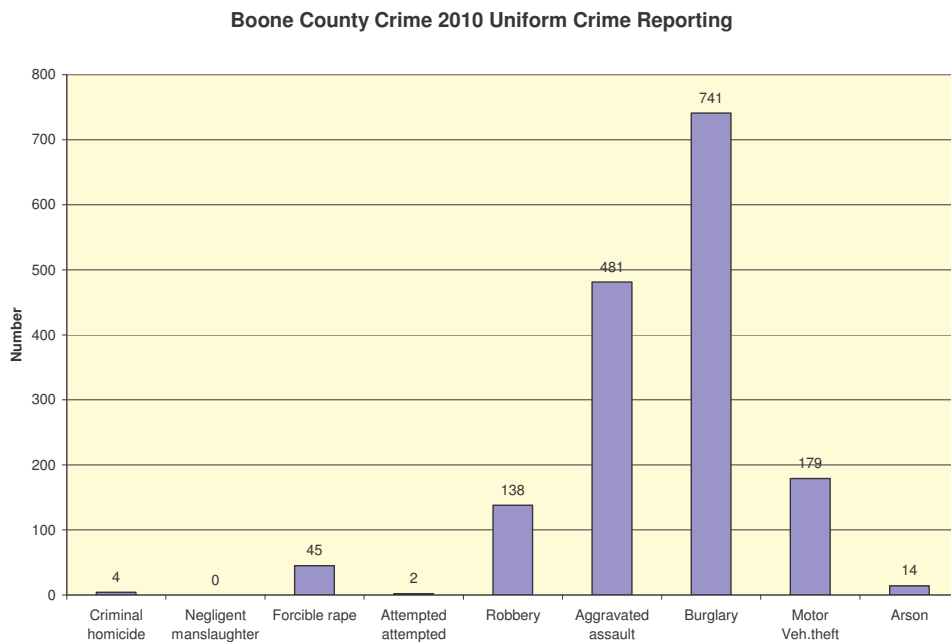
Family Violence and Crime

Violence against women can take many forms, from intimidation and control to stalking, battering, rape and even murder. Indeed, nearly one third of the women in this country who are murdered are killed by a former or current intimate partner. As the leading cause of injury for American women between the ages of 15 and 54 years, violence is an ominous public health problem in this country.

The following definitions are from Intimate Partner Surveillance: Uniform Definitions and Recommendations Data Elements, National Center for Injury Prevention and Control, Centers for Disease Control and Prevention, 2011.



Source: Missouri State Highway Patrol Statistical Analysis Center



Priority Diseases or Conditions in Adults

- Heart Disease
- Diabetes
- Alcohol-substance abuse
- Motor Vehicle Accidents

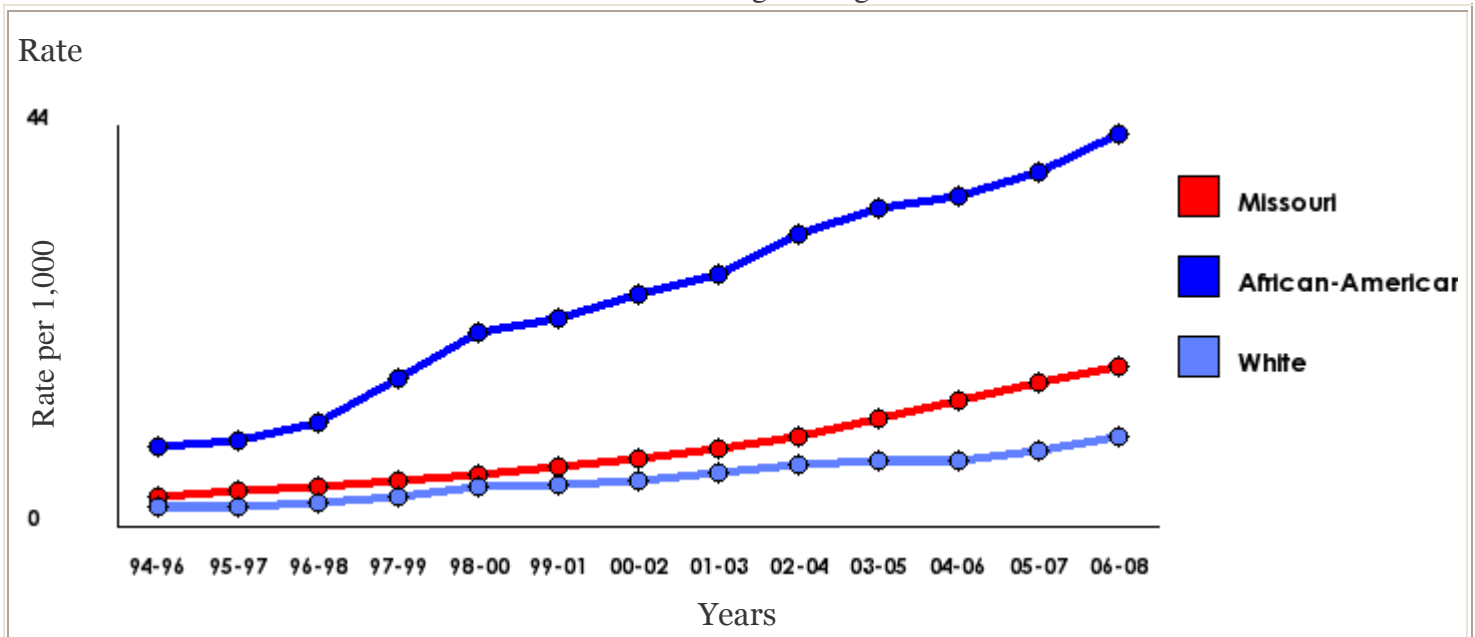
Based on DHSS MICA Priorities

Conclusions

Obesity, lack of exercise, and smoking are contributing factors to cancer, heart disease, diabetes, and stroke. The higher rates of risk-taking behavior by males and younger adults may skew the overall adult rates for violent deaths by motor vehicle incidents and suicide.

The greatest disparities for deaths in minorities of both sexes for diseases and conditions in the adult age groups were HIV/AIDS, assaults/homicides, asthma, prostate cancer, and diabetes. The following chart shows the race disparity for diabetes in Boone County.

ER Visit Rates for Diabetes
Three-Year Moving Average Rates

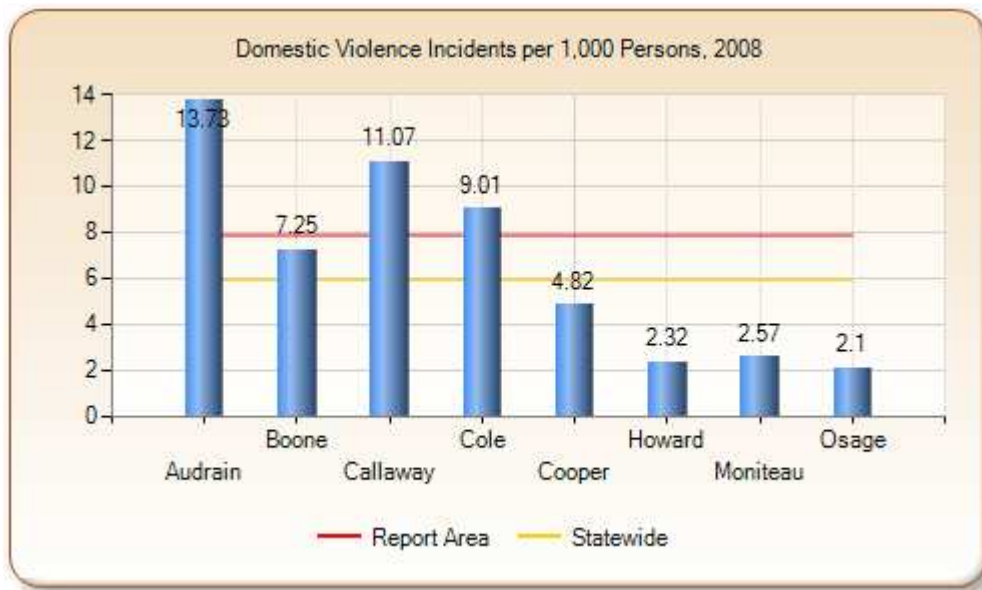


- **Boone County White rate trend shows a statistically significant increase.**
- **Boone County African/American rate trend shows a statistically significant increase.**
- **Missouri rate trend shows a statistically significant increase.**

Source: www.dhss.mo.gov/mica

Domestic Violence

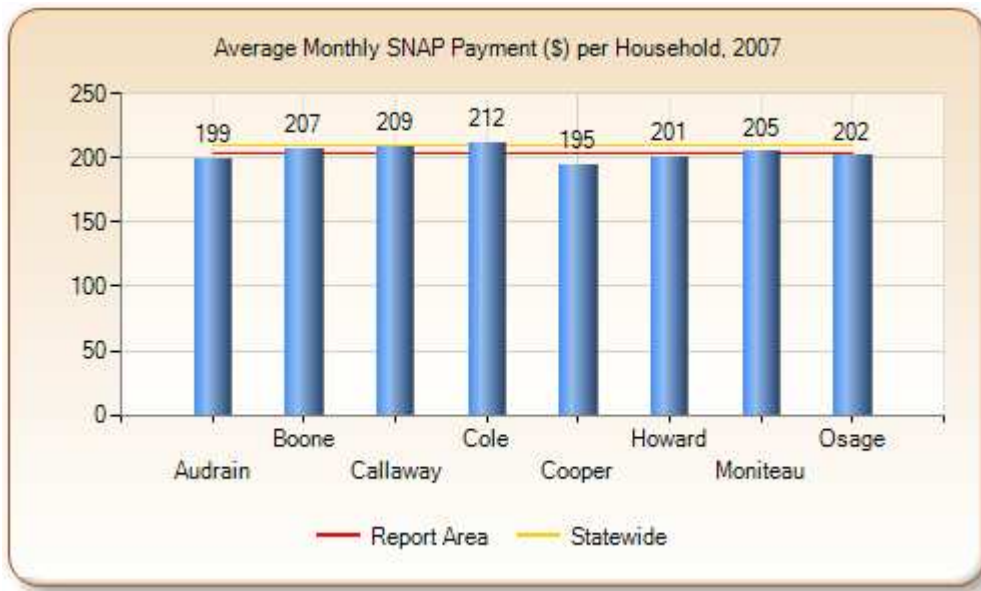
Domestic Violence incidents are reported whether or not an arrest is made and include any dispute arising between spouses, persons with children in common regardless of whether they reside together, persons related by blood, persons related by marriage, non-married persons currently residing together, and non-married persons who have resided together in the past. Incidents within the 8 county report area ranged from 23 in Howard County, to 1,098 in Boone County in 2008.



Source: Missouri State Highway Patrol, Uniform Crime Reporting (UCR) Program, 2009.

Supplemental Nutrition Assistance Program (SNAP)

The average monthly number of households receiving SNAP benefits, the average monthly benefit payment and total SNAP dollars issued per county are shown for the 8 county report area. According to the Missouri Department of Social Services, Boone County had the highest average monthly number of households receiving benefits at 6,405, while Osage had the lowest at 309.



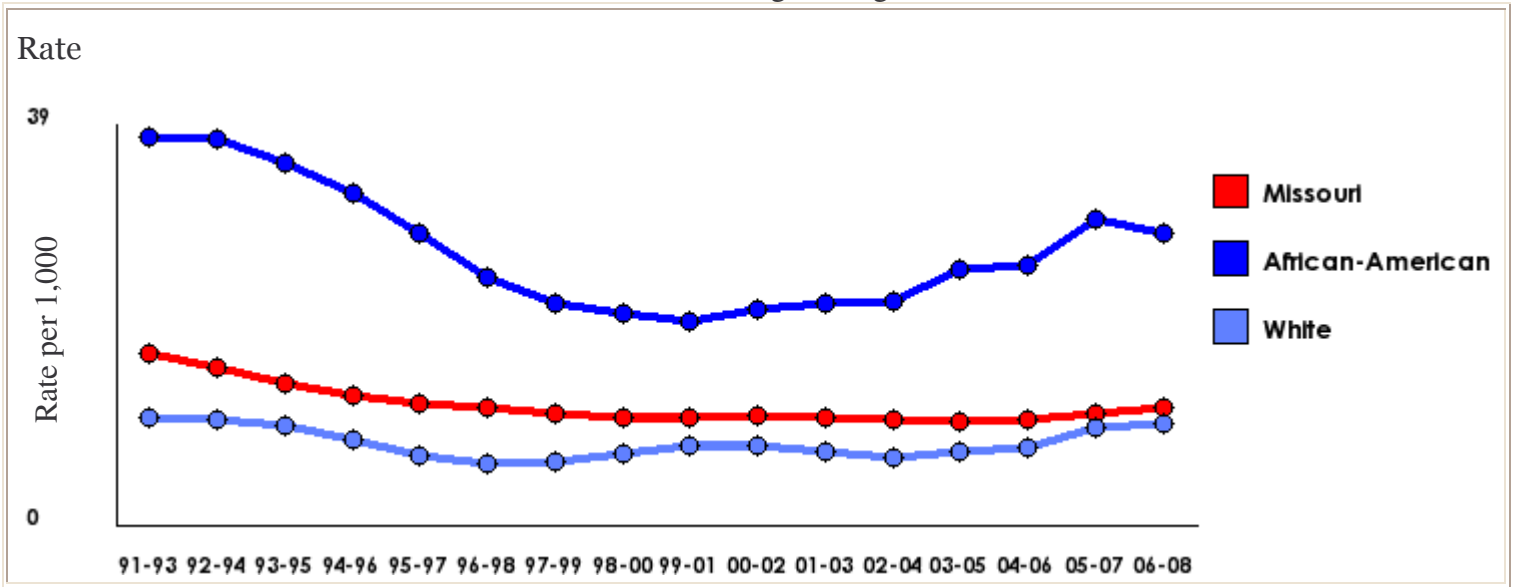
Household Receiving SNAP Benefits, 2007

County	Average Monthly Households Receiving Benefits	Average Monthly Benefit Payment (\$)	Total Benefits Issued (\$)
Boone	6,405	207	15,934,572
Statewide	301,348	210	761,192,859

Source: *Missouri Department of Social Services, Family Support Division, Annual Data Report, Fiscal Year 2007.*

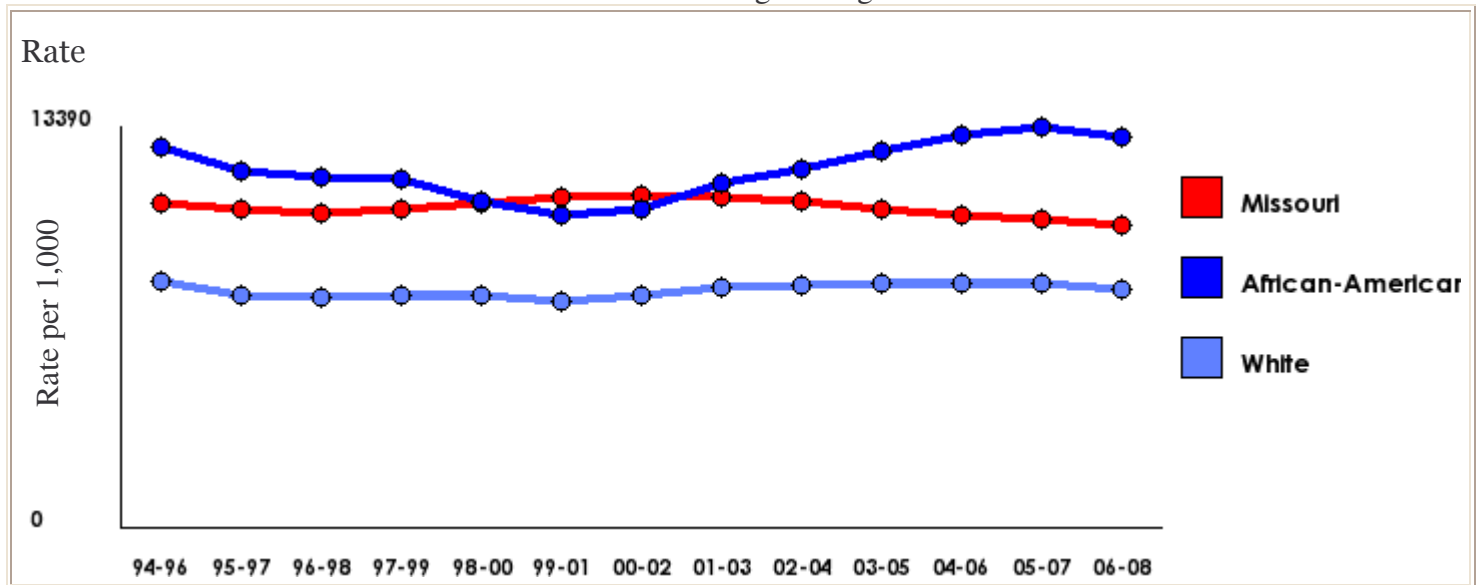
Minority Health

Inadequate Prenatal Care
Three-Year Moving Average Rates



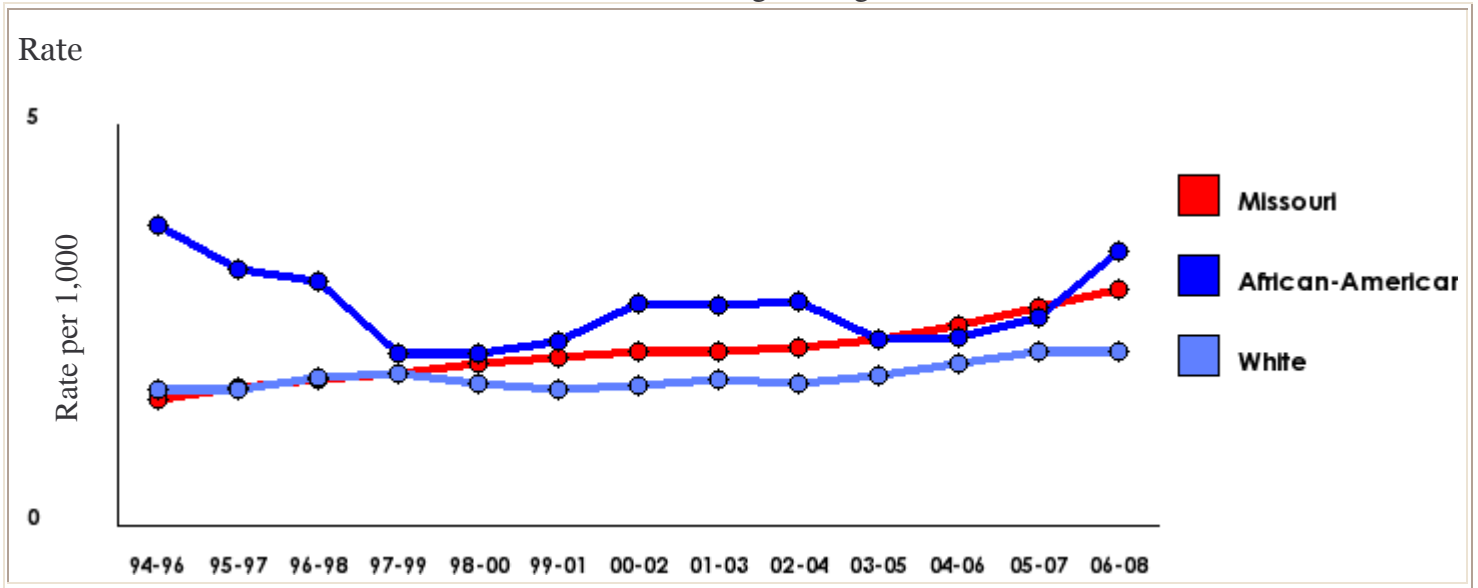
The following charts depict the emergency room visits for selected diseases.

ER Visits: All Injuries
Three-Year Moving Average Rates

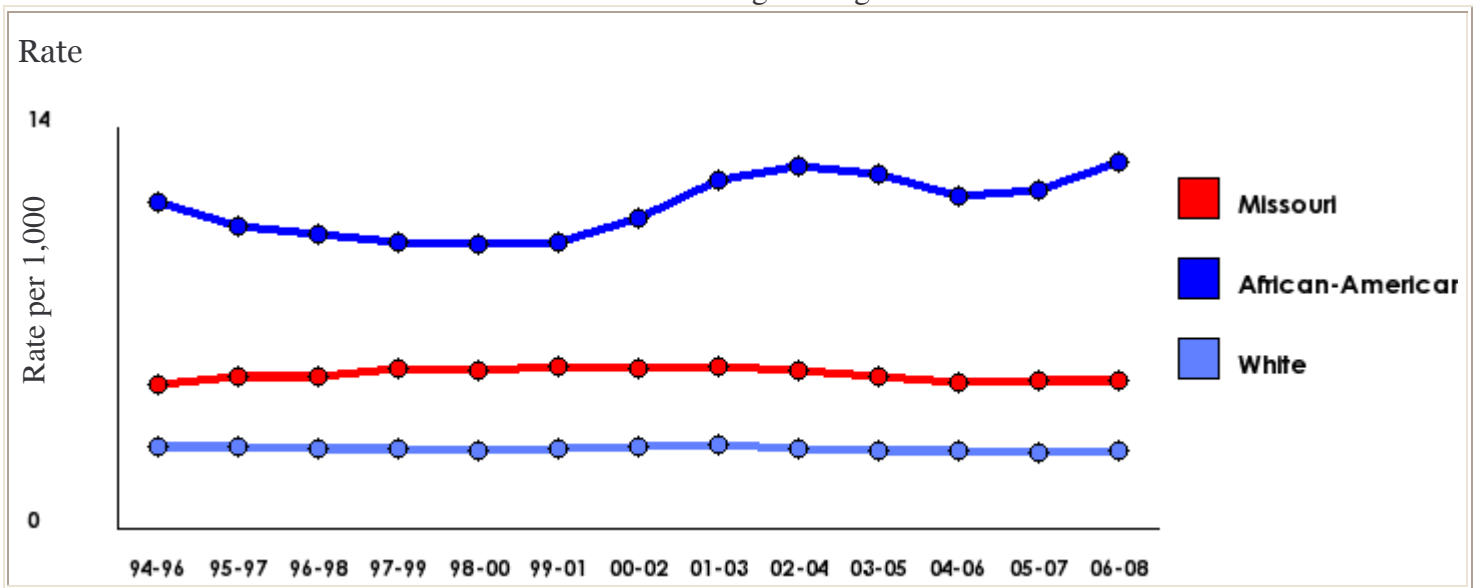


Source: www.DHSS.mo.gov/mica

ER Visits: Alcohol/Drug Abuse
Three-Year Moving Average Rates

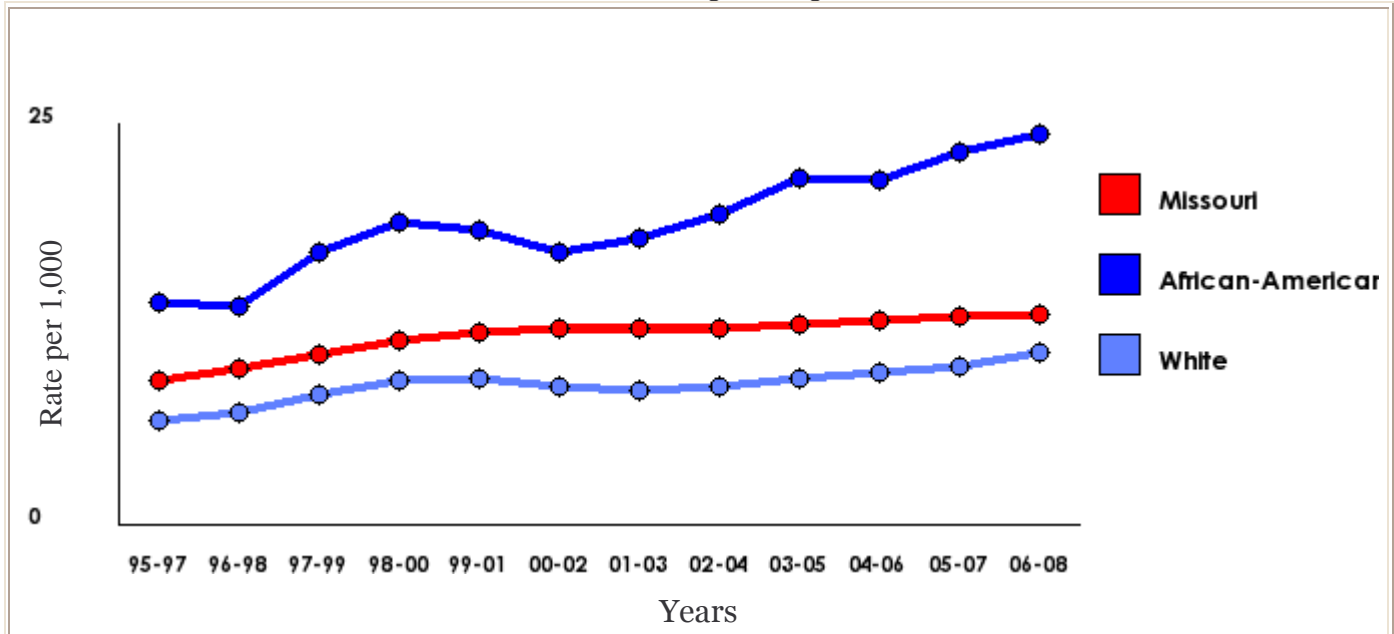


ER Visits: Asthma
Three-Year Moving Average Rates



Source: www.DHSS.mo.gov/mica

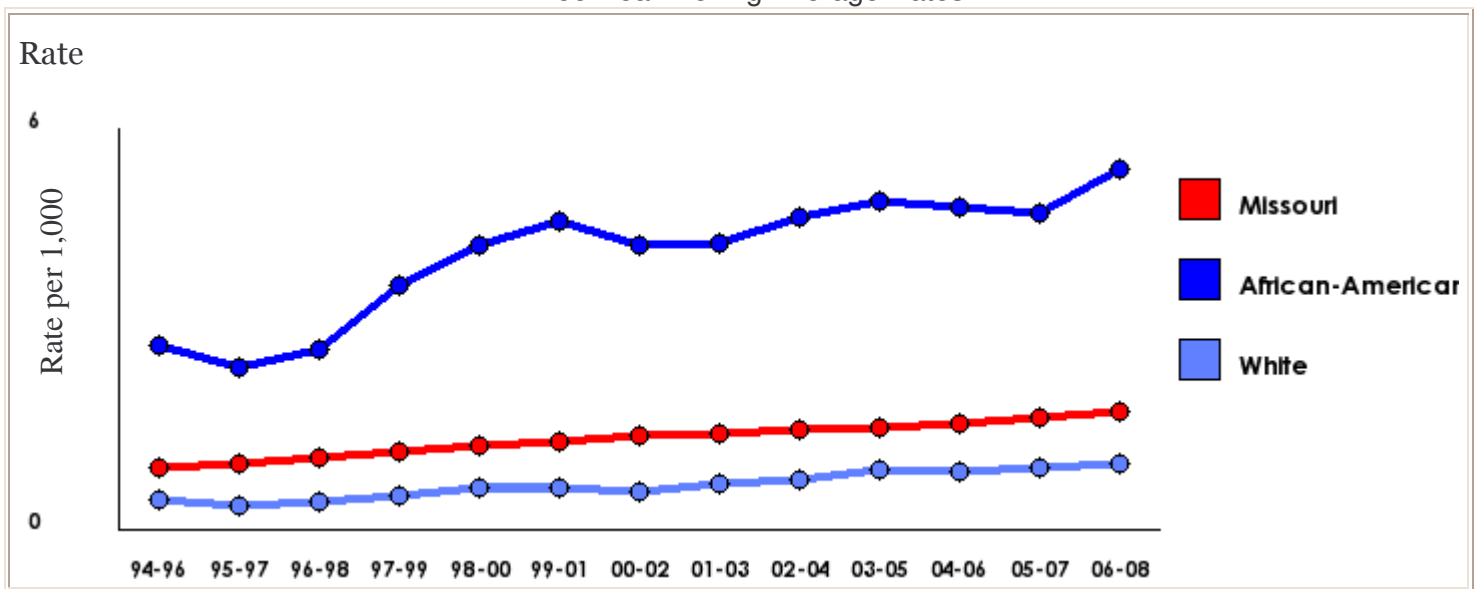
Boone County ER Visit Rates: Heart disease by Race
Three-Year Moving Average Rates



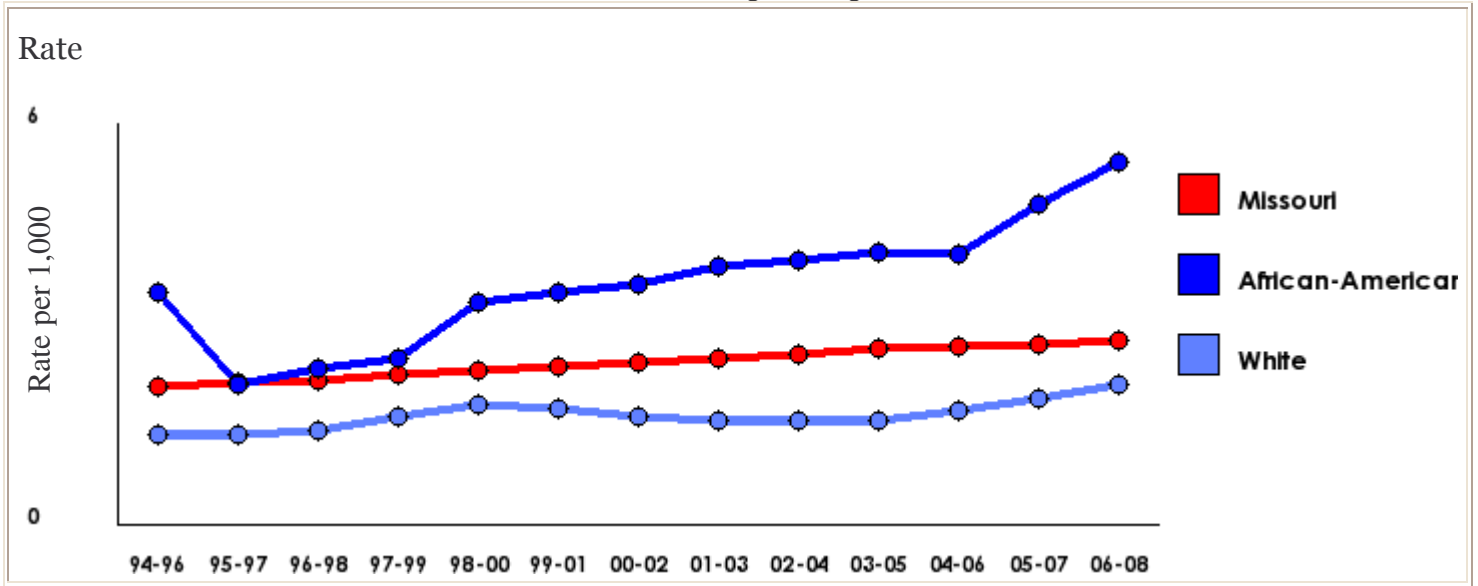
- Boone County White rate trend shows a statistically significant increase.
- Boone County African/American rate trend shows a statistically significant increase.
- Missouri rate trend shows a statistically significant increase.

Source: www.dhss.mo.gov/mica

ER Visits: Diabetes Mellitus
Three-Year Moving Average Rates

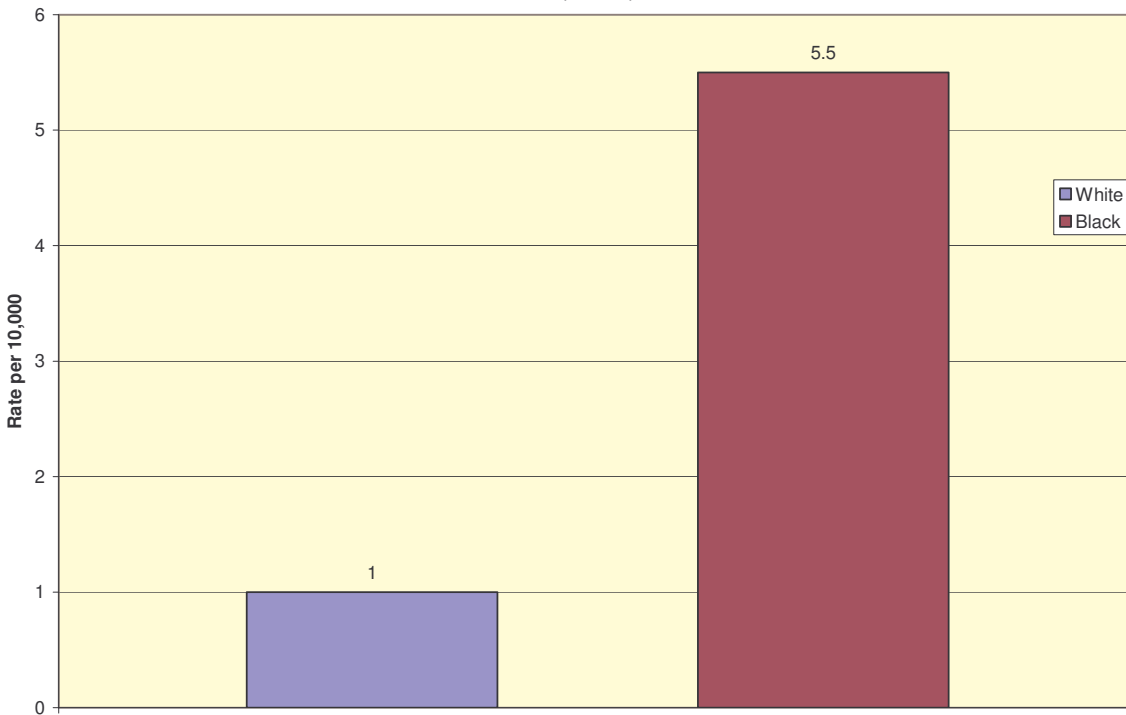


ER Visits: Epilepsy
Three-Year Moving Average Rates

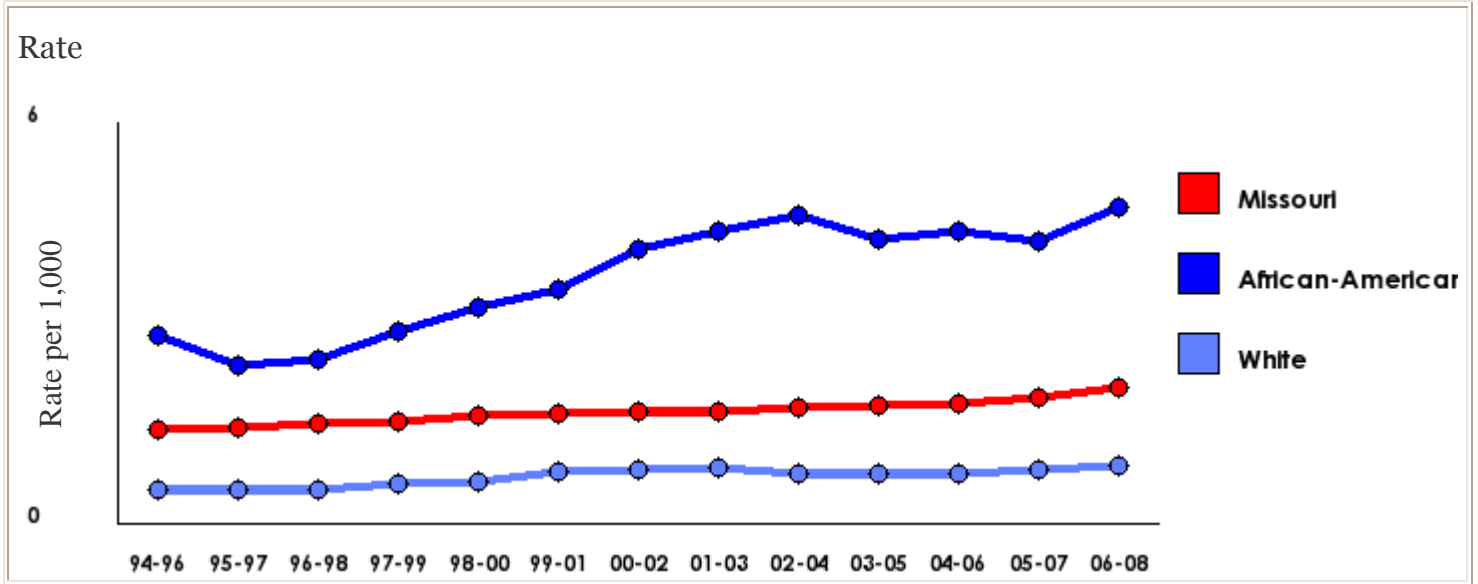


Source: www.DHSS.mo.gov/mica

Emergency Room Visits for Diabetes by Race
2006,2007,2008



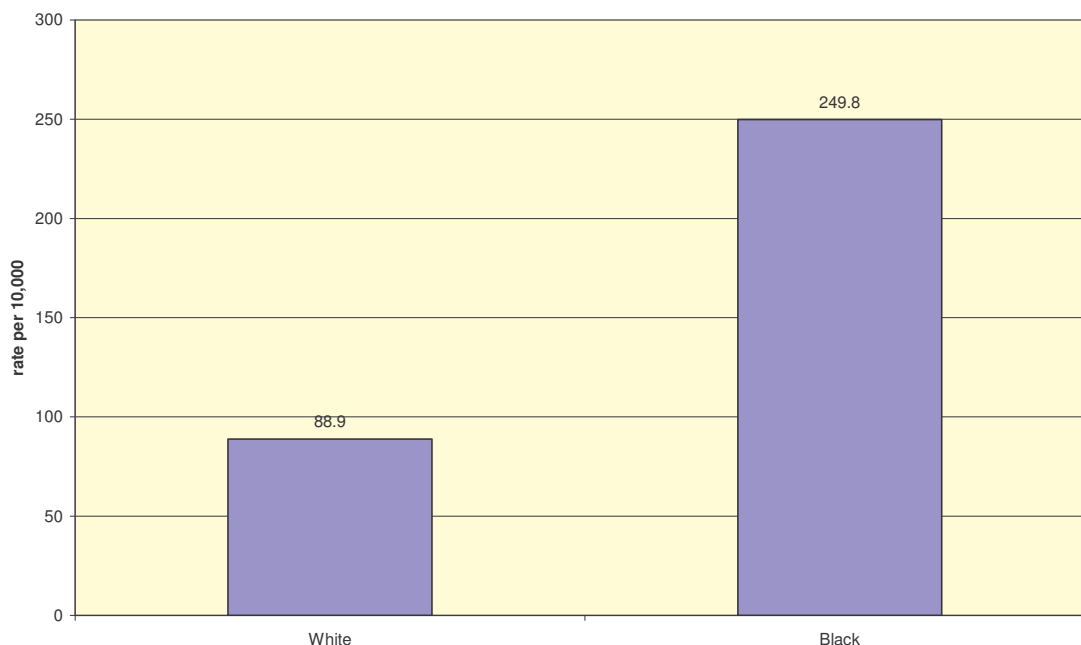
ER Visits: Hypertension Three-Year Moving Average Rates



Source: www.DHSS.mo.gov/mica

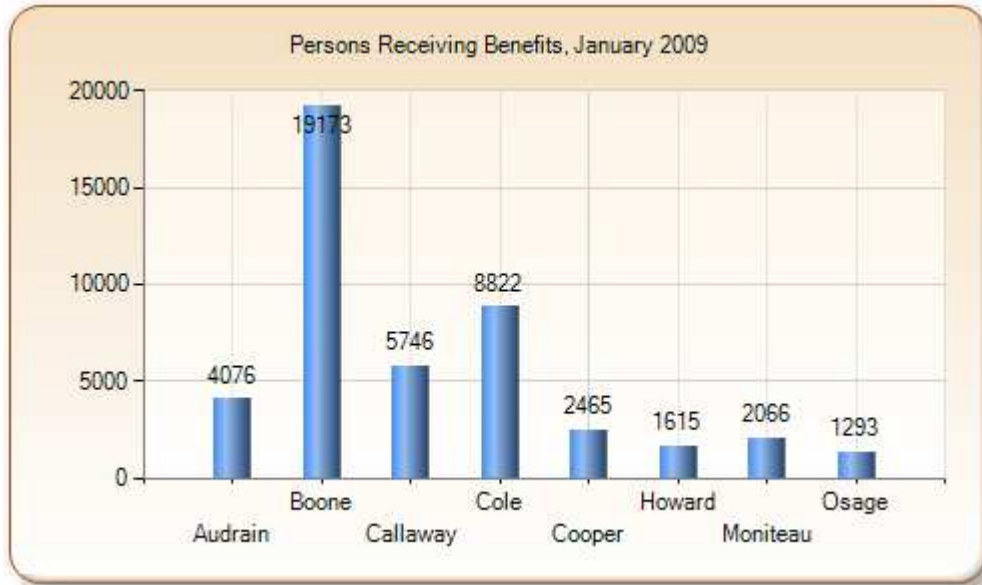
Preventable hospitalizations are those diagnoses for which timely and effective outpatient care can help to reduce the risks of hospitalization by either prevention the onset of an illness or condition, controlling an acute episode, or managing a chronic disease or condition. The table below shows the preventable hospitalization rates by race in Boone County

**Preventable Hospitalizations by Race
2008**



MO HealthNet

The number of persons receiving MO HealthNet benefits and total benefit payments for the 8 county report area are shown in the table below. Benefits range from a high in Boone County of 19,173 to a low in Osage County of 1,293.



MO HealthNet Recipients, January 2009

Source: Missouri Department of Social Services, Family Support Division, MO HealthNet Division, Monthly Management Report, January 2009.

Uninsured Population

The uninsured population is calculated by estimating the number of persons eligible for insurance (generally those under 65) minus the estimated number of insured persons. The table shows the percent of uninsured persons in 2007.

Uninsured Persons, 2007

County	Insurance Population (2005 Estimate)	Number Uninsured	Percent Uninsured
Boone	132,737	22,407	16.9
Statewide	5,042,798	39,124	14.2

Source: <http://www.census.gov/did/www/sahie/data/2007/tables.html>

Seniors Health Concerns

Senior Profile

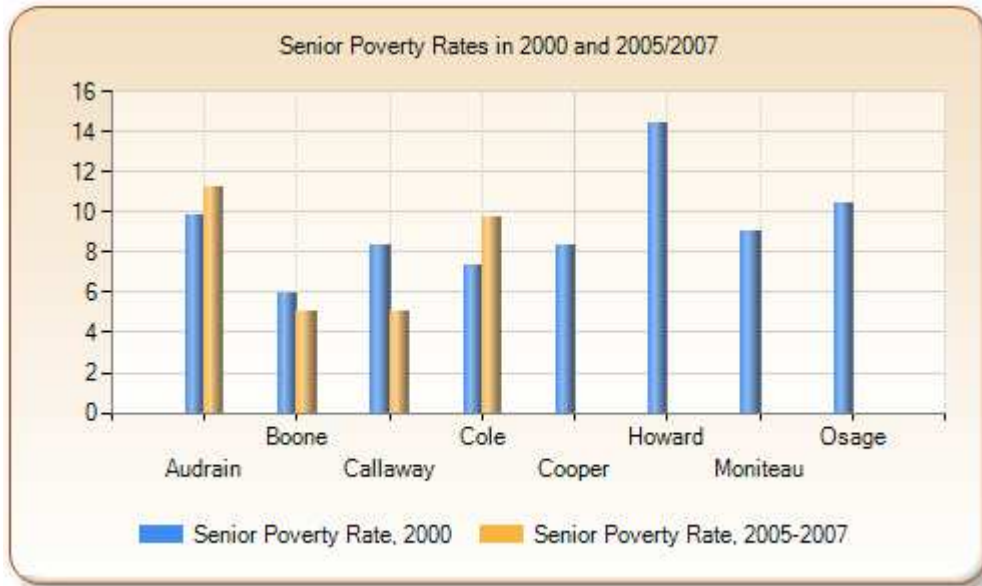
From the 2009 Missouri Senior Report available at http://mcdc2.missouri8i.edu/webrepts/mosenior/profile_reports09/2019.html

STATUS	MEASURE	TREND
All indicators are for persons age 65+		
Social Security as % of total personal income (2007)	.23%	↑
Percent working for pay (2007)	17%	↑
Percent with Missouri driver's license	83.7%	↑
Voters Index	57.5	
Medicaid costs for long term care per capita	\$75	↓
Property & violent crime per 1,000 persons	32.4	
Hospitalizations & ER visits for diabetes per 10,000 seniors	62.5	↑
Primary care physicians per 1,000 seniors	42.4	↑
Population 65+ (2008)	9.4%	↑
Senior owner-occupied housing (2008)	75.4%	
Seniors in poverty (2008)	4.6%	
No exercise (2007)	30.9%	
No sigmoidoscopy or colonoscopy (2007)	17.6%	
High blood pressure (2007)	32.6%	
Obesity (2007)	22.0%	
Smoking (2007)	10.9%	
No mammogram (2007)	33.6%	
High cholesterol (2007)	22.8%	

Seniors in Poverty

Poverty rates for Seniors, including data for all counties from the 2000 Census as of April 1, 2000, and data from the American Community Survey as average values for the 2005 to 2007 period for large population counties (over 20,000 persons), are shown below. In 2000, the senior poverty rate was highest in Howard County at 14.4% and lowest in Boone County at 5.9%. This compares to a statewide rate of 9.9%.

Seniors in Poverty, 2000 - 2005/2007



County	Seniors in Poverty, 2000	Senior Poverty Rate, 2000	Seniors in Poverty, 2005-2007	Senior Poverty Rate, 2005-2007
Boone	648	5.9	651	5.0
Statewide	70,476	9.9	72,148	9.8

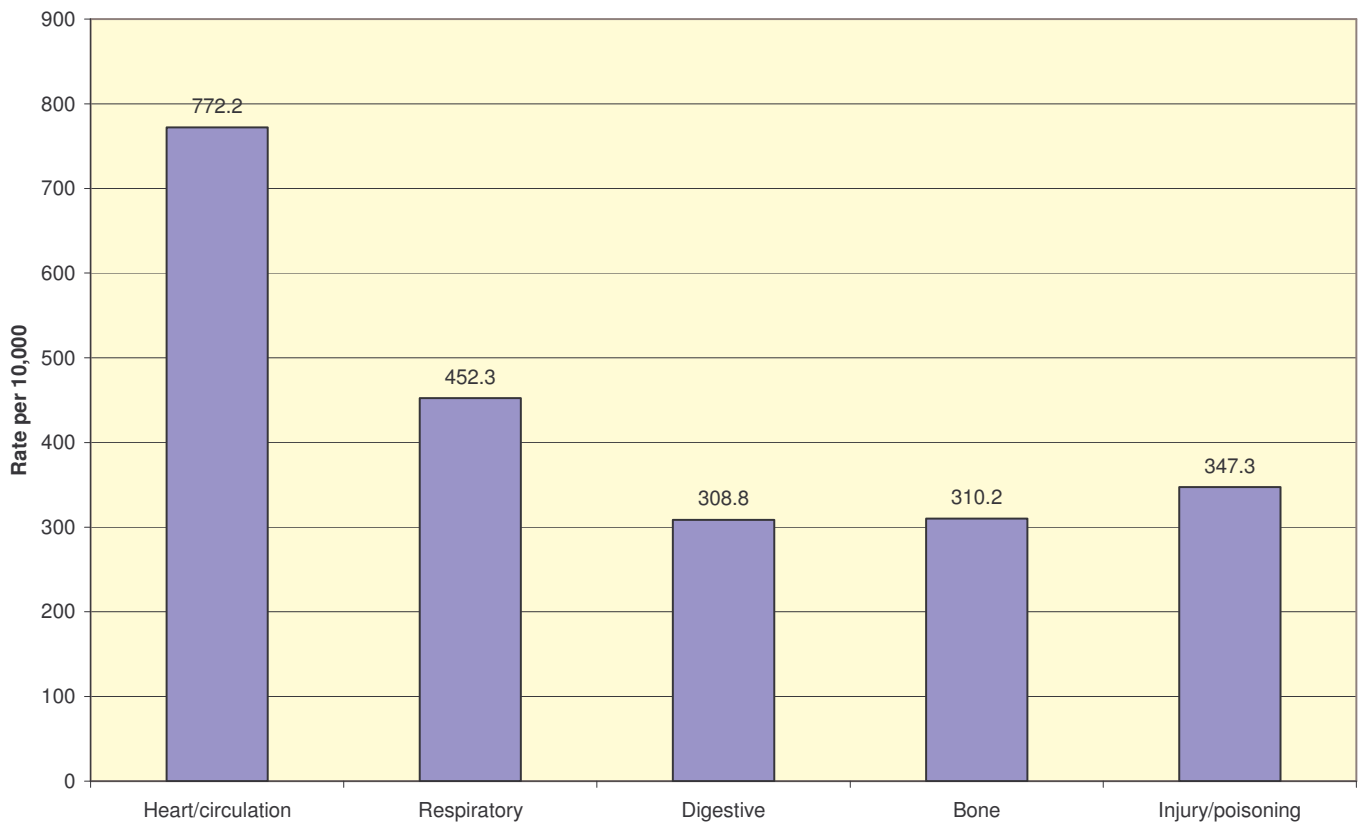
Source: *U.S. Census Bureau, 2000 Census of Population and Housing, Summary File 3, 2000.*; *U.S. Census Bureau, American Community Survey, 2007 Data Release, December 2008.*

Note: American Community Survey data only available for areas with 20,000 or more persons.

Senior Hospitalizations

The following chart shows the hospitalization rates for senior citizens greater than 65 years of age.

Senior Hospitalization Rate - Boone County



Priority Risk Factors for Seniors

Priorities are computed by DHSS based on a number of criteria including number of hospitalizations and emergency department visits, number of deaths, deaths under age 65, disability burden and racial disparity.

- Obesity
- Smoking
- No exercise
- No mammography

Priority Diseases/Conditions in Seniors

- Diabetes
- Heart disease
- Lung cancer
- Arthritis/lupus
- Falls
- Chronic Obstructive Pulmonary Disease (COPD)
- Pneumonia & influenza

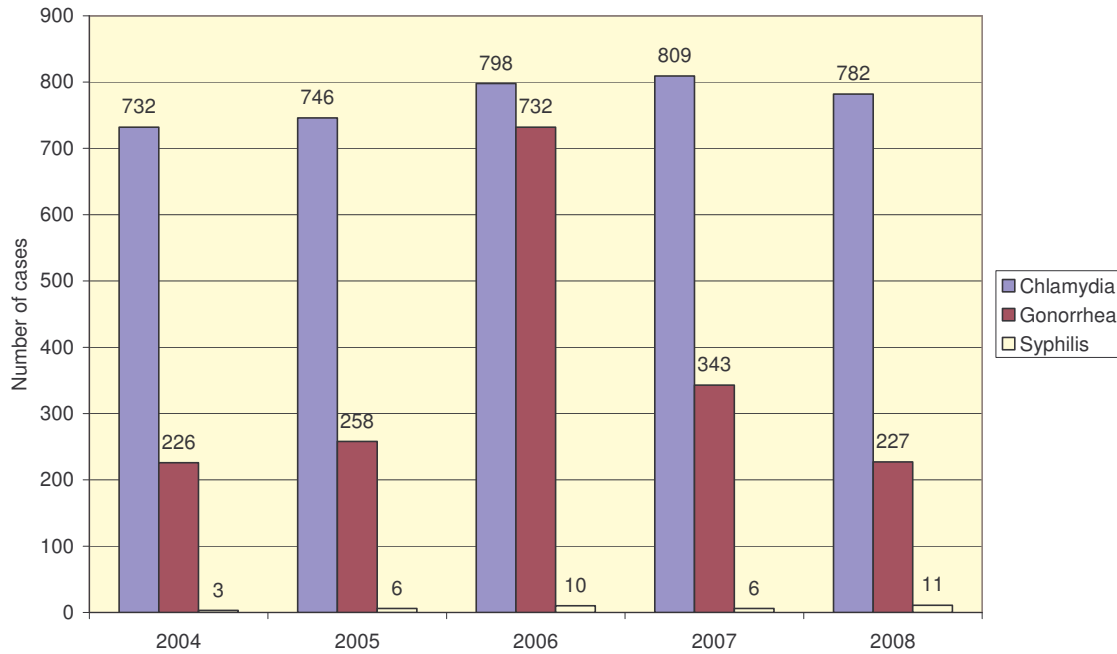
Conclusions

Many of the illnesses and deaths experienced by seniors over the age of 65 are in part a culmination of lifestyle choices such as smoking, lack of activity, poor diet, and lack of regular prevention and screening services. In addition seniors experience a higher rate of falls and injuries probably related to loss of mobility (arthritis), lack of stability, poor vision, weakness, and disorientation.

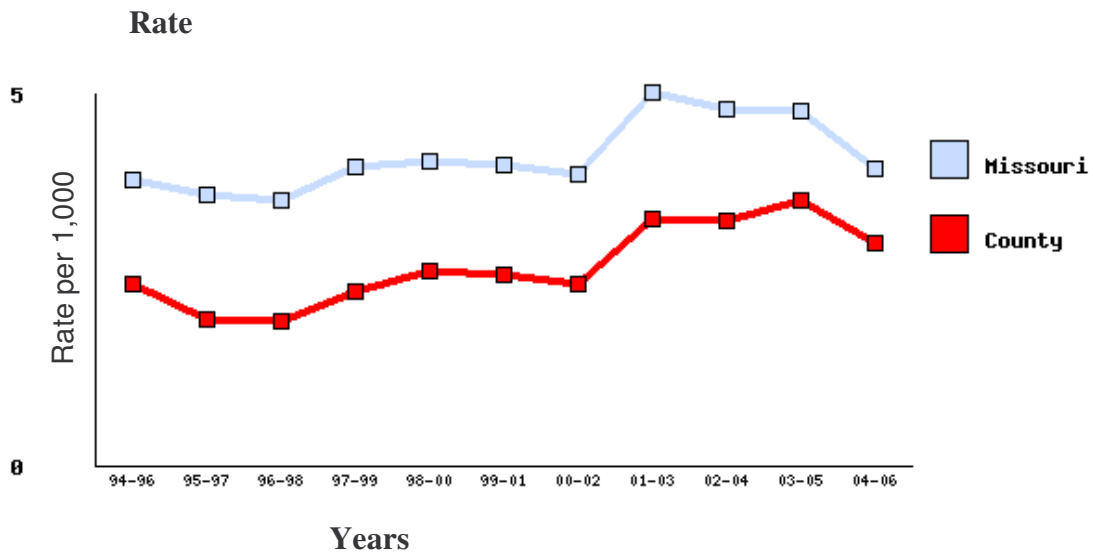
Analysis of Communicable Disease Rates

Boone County's sexually transmitted diseases

Sexually Transmitted Diseases - Boone County
2008 data is provisional

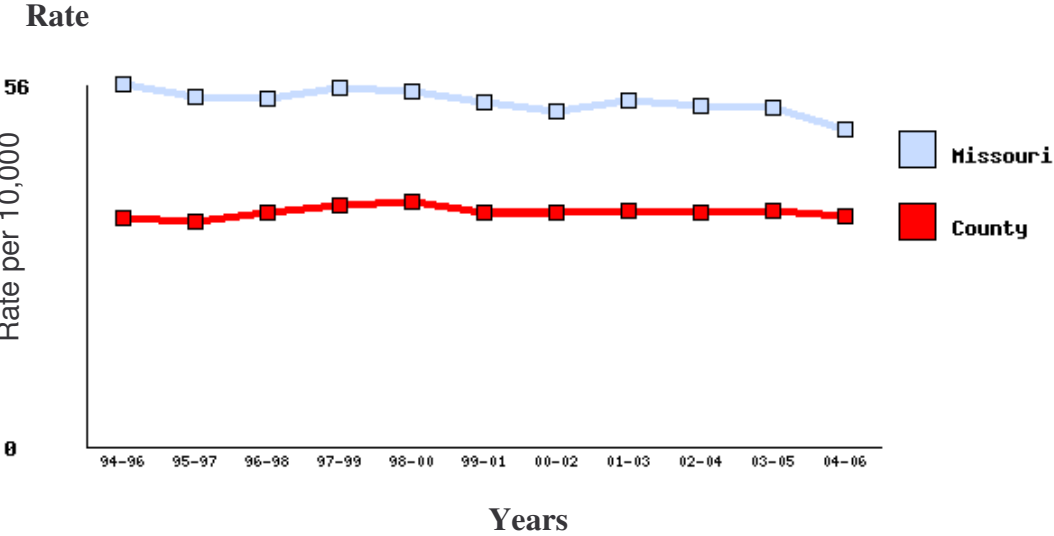


ER: 3-Year Average Rates for Pneumonia and Influenza



Source: DHSS Community Data Profiles for emergency room visits

Hospitalization Profile 3-Year Average Rates for Pneumonia and Influenza for Boone County Residents



Source: DHSS Community Data Profiles for Hospitalizations

Boone County's rate is not changing while the state's rate is decreasing.

Analysis of Chronic Disease Rates

Physical inactivity is a risk that contributes to obesity and ultimately affects chronic disease rates including heart disease, diabetes, and certain cancers. Inactivity appears to emerge as a lifestyle in middle school children. Missouri Assessment Program no longer tracks health and physical education scores for Columbia and Missouri school children. In the last available report in 2002 only 1/3 of Columbia 9th graders were proficient, defined as meeting the state standard scores.

The County Level Study 2007 shows the following chronic disease indicators for Boone County adults.

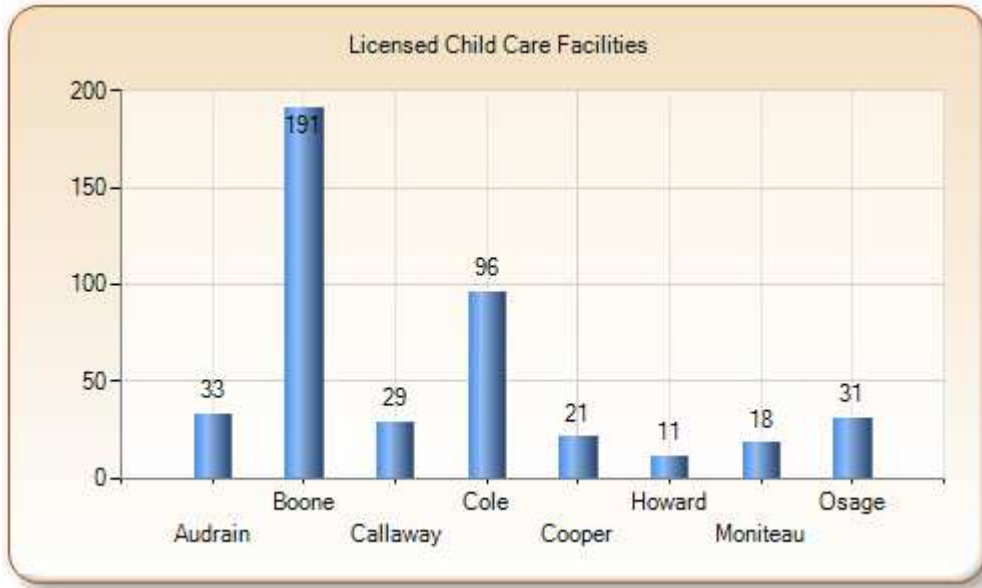
Indicator	Percent
No health care coverage	14
Smoking	18
No leisure-time physical activity	18.2
Less than 5 fruits/vegetables per day	71.7
Overweight	35.5
Obese	25.9
High Blood pressure	14.2
High cholesterol	17.8
Diabetes	5.7
No mammogram or breast exam in past year	18.1
No sig or colonoscopy in past 10 years	26.2
No pap smear in last 3 years	14.4

Source: [DHSS County Data Profiles 2007 Health and Preventive Practices](#)

Community Resources

Child Care Facilities

The number of licensed child care facilities and total maximum capacity of slots are shown below. According to the Missouri Department of Health and Senior Services, The number of licensed child care facilities range from 11 in Howard County to 191 in Boone County.



Licensed Child Care Facilities

County	Number of Facilities	Total Maximum Capacity
Boone	191	5,566
Statewide	4,416	148,819

Source: Missouri Department of Health and Senior Services, Section for Child Care Regulation, June 2008.

Longterm Care Facilities

The following table is the most current list of long term care facilities in Boone County.

FACILITY NAME	LEVEL OF LICENSURE	CITY
<u>ASHLAND HEALTHCARE</u>	<u>SKILLED NURSING FACILITY</u>	ASHLAND
<u>ASHLAND VILLA-ASSISTED LIVING BY AMERICARE</u>	<u>ASSISTED LIVING FACILITY OPTION 2</u>	ASHLAND
<u>BLUEGRASS TERRACE</u>	<u>RESIDENTIAL CARE FACILITY I</u>	ASHLAND
<u>BLUFF CREEK TERRACE-ASSISTED LIVING BY AMERICARE</u>	<u>ASSISTED LIVING FACILITY OPTION 2</u>	COLUMBIA
<u>BLUFFS, THE</u>	<u>SKILLED NURSING FACILITY</u>	COLUMBIA
<u>BRISTOL MANOR OF CENTRALIA</u>	<u>RESIDENTIAL CARE FACILITY I</u>	CENTRALIA
<u>CANDLELIGHT LODGE RETIREMENT CENTER</u>	<u>RESIDENTIAL CARE FACILITY II</u>	COLUMBIA
<u>COLUMBIA HEALTHCARE CENTER</u>	<u>SKILLED NURSING FACILITY</u>	COLUMBIA
<u>COLUMBIA MANOR CARE CENTER</u>	<u>SKILLED NURSING FACILITY</u>	COLUMBIA
<u>DAYBREAK RESIDENTIAL TREATMENT CENTER</u>	<u>RESIDENTIAL CARE FACILITY I</u>	COLUMBIA
<u>HARAMBEE HOUSE, INC</u>	<u>RESIDENTIAL CARE FACILITY II</u>	COLUMBIA
<u>HERITAGE HALL NURSING CENTER</u>	<u>SKILLED NURSING FACILITY</u>	CENTRALIA
<u>HILLCREST RESIDENTIAL CARE</u>	<u>ASSISTED LIVING FACILITY OPTION 1</u>	COLUMBIA
<u>LENOIR GARDENS</u>	<u>RESIDENTIAL CARE FACILITY II</u>	COLUMBIA
<u>LENOIR HEALTH CARE CENTER</u>	<u>SKILLED NURSING FACILITY</u>	COLUMBIA
<u>LENOIR MANOR</u>	<u>RESIDENTIAL CARE FACILITY I</u>	COLUMBIA
<u>PARKSIDE MANOR</u>	<u>SKILLED NURSING FACILITY</u>	COLUMBIA
<u>SOUTH HAMPTON PLACE</u>	<u>SKILLED NURSING FACILITY</u>	COLUMBIA
<u>STUART HOUSE, THE</u>	<u>INTERMEDIATE CARE FACILITY</u>	CENTRALIA
<u>STURGEON REST HOME</u>	<u>RESIDENTIAL CARE FACILITY I</u>	STURGEON
<u>TIGER PLACE</u>	<u>INTERMEDIATE CARE FACILITY</u>	COLUMBIA

Source: DHSS

Other Resources for seniors

The Division of Senior and Disability Services Region 5 office is located in Columbia:
1500 Vandiver Drive, Suite 102
Columbia, MO 65202

Assisted living – Senior Apartments and Retirement Centers:

Boone Retirement Center: 1623 Anthony St. Columbia, MO
Lenoir Health Care Center: 3300 New Haven Ave, Columbia, MO
Lenoir Retirement Community: 3612 S. Lenoir St. Columbia, MO

Central Missouri Regional Arthritis Center: Stephen’s College, Hillcrest Hall, 1507 E. Broadway, Columbia, MO

Community Issues Management (CIM)

The Department of Public Health & Human Services Department is engaged in the implementation of a web-based system designed to help local and regional organizations frame, manage, and take action on complex community issues. The system combines data (agency, local, state, national) with GIS mapping and reporting tools to enable visualization and understanding of how issues impact people and place. This undertaking is new and no results are available at this time. The national CIM website offers examples of how the technology can be used: www.CIM-network.org

The Public Health Department has entered into an agreement to collaborate with the Center for Applied Research and Environmental Systems (CARES) at the University of Missouri and the Office of Social and Economic Data Analysis (OSED) – both located at the University of Missouri – on this project. In addition, the Public Health Department serves on the CIM Advisory Board.

Community Capacity for Health Care

Hospitals in Columbia

	Licensed Beds	Occupancy rate (2008)
Boone Hospital Center	394	54.8
Columbia Regional Hospital	190	31.3
University Hospitals and Clinics	Not available	Not available
Harry S Truman Memorial Veteran's Hospital	Not available	Not available
Mid Missouri Mental Health Center	Not available	Not available
Rusk Rehabilitation Center	60	78.2
Landmark Hospital- Long-Term Acute Care	Certified in 2010	

Source: [DHSS County Data Profiles Hospitals](#)

Columbia/Boone County Department of Public Health & Human Services

The Columbia/Boone County Department of Public Health and Human Services provides core public health functions, expanded health services, and human services relating to its vision: Optimal health, welfare, and safety for all. Activities include: communicable disease prevention, chronic disease prevention, maternal/child health services, environmental health services, animal control, social services, human rights education and enforcement, vital records management, and emergency and disaster preparedness. The department monitors the health and social well-being of the community and assists in the development of policies and plans that support its vision. In order to ensure broad and sustainable support for its vision, the department provides a high level of leadership in the community through collaboration and education. Its annual operating budget is approximately \$5,000,000. Website: www.gocolumbiamo.com

Additional Health Information

Number of Licensed Child Care Facilities: 200; Capacity: 6,073
Family Health Center, Federally Qualified Health Center: 1

Ratios of care providers to population in Boone County:

Licensed physicians: 1:178
FTE (full time equivalents) primary care physicians to population: 1:969
Primary care physician FTE to poverty population (below 200 Poverty Level): 1:3,136
Licensed dentists to population: 1:1,472
Ratio of RNs Per Population: 1:56

Source: DHSS

Quick Reference to Indicator Rates

Preconception

Term	Definition
Births to females by age of mother	Percent of total live births
STDS (Chlamydia, Gonorrhea, Syphilis)	per 100,000 females 15-44
Births to females with less than 12 years of education	Percent of total live births
Mother \geq 20 percent overweight for height	Percent of total live births with known pre-pregnancy weight and height
Mother $>$ 15 percent underweight for height	Percent of total live births with known pre-pregnancy weight and height
Total live births and fertility rate	Rate per 1,000 females ages 15-44

Live Births – 5 year change	Percent change
Fertility rate – 5 year change	Percent change in rate
Teen Fertility Rate Under Age 18	Per 1,000 females 15-17
Teen Pregnancy Rate Under Age 18	Per 1,000 females 15-17
Repeat Births Under Age 20	Percent of total live births
Out-of-wedlock births	Percent of total live births
Spacing less than 18 months	Percent of second and higher order births with known spacing
Parity 4 +	Percent of total live births
Induced Abortions	Ratio per 1,000 live births
Repeat Abortions	Percent of total abortions
Induced Abortions to females <18	Percent of pregnancies to females under 18
Unintended deliveries	Percent of total live births plus fetal deaths

Prenatal

Care Began First Trimester	Percent of total live births with known month prenatal care began
Late care (2nd/3rd Trimester)	Percent of total live births with known month prenatal care began
No care	Percent of total live births with known month prenatal care began
Inadequate prenatal care	Percent of total live births with known adequacy of care

Prenatal Medicaid participation	Percent of total live births with known Medicaid status
Prenatal WIC participants	Percent of total live births with known WIC status
Prenatal Food Stamps participation	Percent of total live births with known Food Stamps status
Weight gain <15 pounds full-term singletons	Percent of full-term singleton live births with known weight gain/loss
Weight gain >=45 pounds full-term singletons	Percent of full-term singleton live births with known weight gain/loss
Mother smoking	Percent of total live births

Delivery

Non-Hospital Deliveries	Rate per 1,000 live births
High risk not delivered in obstetric level II/III	Percent high risk deliveries born in Missouri
Cesarean deliveries	Percent of total live births
VBAC	Percent of (repeat Cesarean+VBAC)
Fetal deaths	Rate per 1,000 (live births plus fetal deaths)
Known Pregnancies	Total number of known deliveries+induced abortions
Healthy Live Births/(Known Pregnancies)	Percent of total known pregnancies
Healthy Live Births/(Live Births+Fetal Deaths)	Percent of total known deliveries(live births+fetal deaths)
Abortions/Known Pregnancies	Percent of total known pregnancies

Morbidity

Premature <37 weeks gestation	Percent of total live births with known gestational age
Low birth weight <2500 grams	Percent of total live births
Low Birth Weight & Term	Percent of total term live births
Very low birth weight <1500 grams	Percent of total live births
Small for gestational age	Percent of total singleton live births with known gestational age
Birth Defects	Rate per 10,000 live births
Neural Tube Defects	Rate per 10,000 live births

Utilization

Very Low Birth Weight Care for in Level III Centers	Percent of very low birth weight born in Missouri
Infants Participating in WIC	Percent of total live births
Infants on Medicaid	Percent of total live births

Mortality

Neonatal Deaths	Rate per 1,000 live births
Perinatal Deaths	Rate per 1,000 (live births plus fetal deaths)
Postneonatal deaths	Rate per 1,000 live births
Infant deaths	Rate per 1,000 live births
Sudden Infant Death Syndrome(SIDS)	Rate per 1,000 live births

Primary Data Sources for This Report

1. Department of Health and Senior Services Missouri Information for Community Assessment. <http://www.dhss.mo.gov/DataAndStatisticalReports/index.html>
2. MICA <http://www.dhss.mo.gov/MICA/> is a web-based access to the information collected by DHSS including birth and death statistics, US Census Data as it applies to Missouri and its counties, hospitalizations, diseases. The information is available at the user's choice by a number of demographic parameters including age, sex, and race. Reports can be copied directly into Excel spread sheets for preparation of graphs and charts. The Priority MICA provides a structured process to assist in determining the priority health needs of a community. The disease/risk factors were selected for inclusion into the application based on DHSS strategic plan, Health People 2010, and available data.

The Priority MICA separates diseases from risk factors because the same criteria for prioritizing diseases cannot be used to prioritize risk factors. For example, there are no death data for the risk factors "high cholesterol" or "mother underweight," and there are no incidence or prevalence data for most diseases.

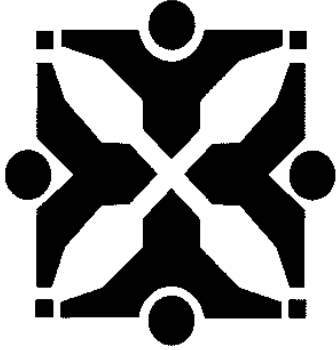
3. U.S. Census: <http://censtats.census.gov/>
4. Missouri Center for Census Data: http://mcdc2.missouri.edu/websas/dp3_2ktmenu/mo/
5. Missouri Kids Count: http://mcdc2.missouri.edu/data/indctrs/kidscnt/reports_graphs/reports.html uses Census Data to prepare reports related to child wellness issues.
6. American Community Survey: <http://www.census.gov/acs/www/Products/Profiles/Chg/2003/ACS/MO.htm>
7. Office of Social and Economic Data Analysis at University of Missouri-Columbia: <http://www.oseda.missouri.edu>
8. Missouri Department of Public Safety: <http://dps.mo.gov/home/dps/home.htm>
9. Missouri Department of Economic Development: <http://www.ecodev.state.mo.us/>
10. Missouri State Highway Patrol Universal Crime Report: <http://www.mshp.dps.missouri.gov/MSHPWeb/Root/index.html>
11. FBI Universal Crime Report: <http://www.fbi.gov/ucr/03cius.htm>

List of Acronyms

MCDC	Missouri Census Data Center
DHSS	Department of Health and Senior Services
MICA	Missouri Information for Community Assessment
DESE	Department of Elementary and Secondary Education
STD	Sexually transmitted disease
WIC	Women Infants and Children Program

Resource and Referral Guide

Updated November 2010



Columbia/Boone County Resource and Referral Guide

Published by
Columbia/Boone County
Department of Public Health
and Human Services

OCS@GoColumbiaMO.com
v 573.874.7488
tty 573.874.7356
1005 West Worley
Columbia, MO 65203

(updated November 2010)

HEALTH

HEALTH INSURANCE

Medicaid and MC+ (MO HEALTHNET)

Department of Public Health and Human Services	874-7356
Family Support Division, State of Missouri	882-9180

Medicare

Medicare	866-563-9108
----------	--------------

MEDICAL PROVIDERS

HIV/AIDS Testing

Department of Public Health and Human Services- free	874-7356
Rain - free	875-8687

Routine Care

Family Health Center- Medicaid, MC+, sliding fee scale	214-2314
Boone Hospital Center- physician referral service	815-6400
University Hospital and Clinics- physician referral service	882-7000
MedZou Clinic	214-2314

STD Testing and Treatment

Department of Public Health and Human Services	874-7356
--	----------

Urgent Care

Marvin Mack, M.D.- walk-in clinic	449-2216
Boone Convenient Care- walk-in clinic	874-0008
University Physicians- urgent care	882-1662
Providence Urgent Care	874-6824

Veterans' Health

Harry S. Truman Memorial Veterans' Hospital	814-6000 ext 0
---	----------------

Women's Health

Department of Public Health and Human Services	874-7356
Planned Parenthood	443-0427
Family Health Center	214-2314
MO Department of Health Show-Me Healthy Women	573-522-2845

MENTAL HEALTH

Burrell Behavioral Health- MO HealthNet, insurance	777-7500
Family Counseling Center- MO HealthNet, insurance & sliding scale	449-2581
Missouri Psychiatric Center	884-1300
New Horizons- MO HealthNet	443-0405
UMC Psychological Services Clinic- insurance and sliding scale	882-4677

HEALTH

SUBSTANCE ABUSE TREATMENT/SUPPORT

AA/NA (Focus on Recovery)	800-234-0420
Daybreak - for dual diagnosis	875-8088
DRD (methadone clinic)	449-8338
McCambridge Center- for women	449-3953
Missouri Psychiatric Center	884-1300
Pathways (adolescents)- MO HealthNet, private, sliding fee scale	449-4770
Phoenix Programs	442-7026

OTHER HEALTH RESOURCES

Dental

Columbia Dental Care Center- MO HealthNet for Pregnant Women & Children	441-9442
Department of Public Health and Human Services	874-7356
Family Health Center Dental Clinic	777-8997
Kings Daughters- referral made by school nurse	
Mid-Missouri Dental Center- MO HealthNet for Kids	814-1694
Salisbury Dental Center	660-388-6950
UMKC Dental School	816-235-2111
Vanderveen Dental- MO HealthNet for Kids & Pregnant Women	443-8100
Voluntary Action Center (co-pay assistance)	449-6959

Medication Assistance

Department of Public Health and Human Services	874-7356
Voluntary Action Center	874-2273

Optical

Department of Public Health and Human Services	874-7356
Lions Eye Research- glasses only	443-1471
Prevention of Blindness Program, State of Missouri	573-751-3428

Pregnancy Testing and Support

Department of Public Health and Human Services	874-7356
Birthright	442-8844
Lutheran Family and Children's Services	815-9955
My Life Clinic	874-3561
Planned Parenthood	443-0427

Smoking Cessation

Department of Public Health and Human Services	874-7356
--	----------

HUMAN SERVICES

AGING AND DISABILITY SERVICES

Boone County Council on Aging (BCCA)	443-1111
Boone County Family Resources	874-1995
Bureau of Special Health Care Needs, State of Missouri	882-9861
Central Missouri Area Agency on Aging (CMAAA)	443-5823
Central Missouri Regional Center, State of Missouri	882-9835
Meals on Wheels- home delivered meals	886-7554
Senior and Disability Services Hotline	800-392-0210
Services for Independent Living	874-1646
Social Security Office- S.S., S.S.D.I., S.S.I., and Medicare	866-563-9108
Senior and Disability Services, State of Missouri	800-392-0210

BASIC NEEDS

Clothing

Salvation Army	442-3229
Upscale Resale	445-4803
Voluntary Action Center –clothing items for employment	449-6959
Wardrobe	442-3260

Emergency Shelters

Lois Bryant House- for women and families	875-7874
New Life Evangelistic Center- for men	875-0603
Red Cross- for disaster relief	445-9411
Rainbow House- for children	474-3558
Salvation Army Harbor House	442-1984
St. Francis House- for men	875-4913
True North - domestic violence	875-1369
Welcome Home- emergency shelter for veterans	443-8001

Food

W.I.C. (Women, Infants, and Children)	874-7384
Central MO Area Agency on Aging- age 60+, delivered	449-8000
Food Bank Central Pantry	874-7848
Interfaith Day Center (Loaves and Fishes)	875-0826
The Latter House Food Pantry	474-5885
Meals on Wheels- delivered meals	886-7554
Progressive Missionary Baptist Food Pantry	443-0611
Russell Chapel Food Pantry	443-6028
Salvation Army- commodities	442-3229
Salvation Army Harbor House Soup Kitchen	442-1984
Sophia's Helping Hand Food Pantry	449-0323

HUMAN SERVICES

Food (continued)

The Shepherd's Basket Food Pantry	449-3144
Voluntary Action Center	874-2273

CHILDREN/YOUTH RESOURCES

Child Abuse Hotline

Child Abuse Hotline	800-392-3738
---------------------	--------------

Child Care/Pre-School Information

Project REACH	1-866-973-2240
FSD Child Care Assistance- eligibility required	882-9180
Harrisburg Early Learning Center	875-5959
Head Start	443-8707 ext 237
Child Care Aware of Central Missouri	1-800-243-9685
Mary Lee Johnston Community Learning Center	449-5600
Nora Stewart Memorial Nursery	449-5981
Title 1 Pre-School	214-3915

Child Safety

Car Seats- Columbia Fire Department (by appointment only)	874-7556
SAFE CRIBS Program	771-1815 ext 204

Child Support

Child Support Enforcement, State of Missouri	882-9950
--	----------

Parenting Help

Connecting for Baby	888-542-2230
Connecting for Children	800-706-1742 ext 230
First Chance for Children	777-1815 ext 0
Parent Link	800-552-8522
Parents as Teachers	214-3955
Rainbow House	474-6600
Resource Parents	815-9955

Youth Employment

C.A.R.E. Career Awareness Related Experience	874-6300
Youth Empowerment Zone	256-1896

Youth Enrichment

Access Arts	875-0275
Adventure Club	884-2582
Big Brothers/Big Sisters of Central Missouri	874-3677
Boy Scouts of America	449-2561

HUMAN SERVICES

Youth Enrichment (continued)

Boys and Girls Club	874-1697
Camp Fire USA Missouri Trails Council	449-6821
Centro Latino De Salud, Educacion y Cultura	449-9442
CHA- Moving Ahead	443-2556 ext 1273
City of Columbia Parks and Recreation	874-7460
Daniel Boone Regional Library	443-3161
Fun City Youth Academy	256-1436
Girl Scouts of the Missouri Heartland	1-800-707-1917
Granny's House	442-5683
Imani Mission Center	449-9625
The Intersection	817-0089
The Michael Center	268-4372
Stand By Me: Sharing the Journey (West Blvd school)	214-3670
University of Missouri Extension 4-H	445-9792
University YMCA	882-1550
Voluntary Action Center – program scholarships	449-6959

HOUSING

Affordable Housing

Columbia Housing Authority- public housing/Section 8	443-2556
Columbia Square- private Section 8	445-1721
Habitat for Humanity	499-1202
Hanover Estates	474-0550
Lakewood Apartments- private Section 8	442-2720
Veterans' Administration	814-6244

Home Repair

Boone County Council on Aging- age 55+	443-1111
City of Columbia, Planning Department	874-7239
Central Missouri Community Action	443-1100
USDA Rural Development	875-5540 ext 4

Rent Assistance

Central Missouri Community Action	443-1100
Salvation Army- limited assistance available	442-3229

Transitional Housing

Boys and Girls Town- for youth	874-8686
Phoenix Programs- for persons in recovery	442-7026
Salvation Army Harbor House	442-1984
Sol House- for youth ages 16-21	449-0182

HUMAN SERVICES

Transitional Housing (continued)

True North - domestic violence	875-1369
Welcome Home- for veterans	443-8001

Utility Assistance

Department of Public Health and Human Services	874-7594
Central Missouri Community Action	443-1100
Salvation Army	442-3229

JUSTICE/LEGAL SERVICES

Court Services

Boone County Adult Court Services	886-4180
Boone County Alternative Sentencing Center	886-4082
State of Missouri, Division of Probation and Parole	884-7016

Human Rights

City of Columbia- Division of Human Services <i>(investigates complaints of discrimination in employment, housing, and public accommodation that occur within the City of Columbia)</i>	874-7488 874-7356 (TTY)
Missouri Commission on Human Rights <i>(investigates complaints of discrimination in employment, housing, and public accommodation)</i>	877-781-4236
Federal Equal Employment Opportunity Commission <i>(investigates employment discrimination complaints)</i>	800-669-4000 800-669-6820 (TTY)
U.S. Department of Housing & Urban Development <i>(investigates housing discrimination complaints)</i>	800-669-9777 800-927-9275 (TTY)
U.S. Department of Justice- Civil Rights Division <i>(enforces federal statutes prohibiting discrimination on the basis of national origin, race, color, religion, disability, sex, and familial status)</i>	877-218-5228 202-514-0716 (TTY)
U.S. Department of Education- Office for Civil Rights <i>(civil rights enforcement for equal access to education)</i>	800-421-3481 877-521-2172 (TTY)

Legal Assistance

Mid Missouri Access to Justice	874-2292
Mid-Missouri Legal Services Corp. (Legal Aid)	442-0116

OTHER RESOURCES

Adult Education/Literacy

Adult Basic Education, Columbia Public Schools (Douglass)	214-3690
Job Point	474-8560

Budget Counseling

Consumer Credit Counseling	800-736-0535
Central Missouri Community Action	443-1100

HUMAN SERVICES

Budget Counseling (continued)

Money Smart 443-2556 ext 1279 or 1257

Crisis Help Numbers

Mid-Mo Crisis Line 445-5035 or 888-761-4357

Child Abuse Hotline 800-392-3738

Senior and Disability Services Hotline 800-392-0210

24 Hour Rape and Abuse Hotline (True North) 800-548-2480

Veteran's Suicide Hotline 800-273-8255

Domestic Violence

True North 875-1369 or 800-548-2480

Employment

Job Point 474-8560

Missouri Career Center 882-8821

Veterans' Administration 814-6655

Vocational Rehabilitation, State of MO 882-9110

Youth Empowerment Zone 256-1896

Refugee and Immigration Services

El Centro Latino de Salud, Educacion, y Cultura 449-9442

Refugee and Immigration Services 442-7568

Tax Assistance

AARP 573-445-6914

MO Dept of Revenue Tax Assistance Center 573-751-7191

Volunteer Income Tax Assistance (VITA) 443-8731 ext 212

Transportation

Central MO Area Agency on Aging- age 60+ 443-5823

Columbia Transit 874-7282

Columbia Para Transit- eligibility required 874-7290

Medicaid/MC+- contact plan; for medical appts. only

OATS 449-3789

Services for Independent Living 874-1646

Voluntary Action Center-eligibility required 874-2273

Veterans' Administration 814-6002

Veterans' Services

Veterans' Administration 814-6002

VET Center 814-6206

Please do not copy or reproduce this booklet without permission from the Columbia/Boone County Department of Public Health and Human Services.