

NACCHO Strategic Plan
2023-2025

The logo for NACCHO features the word "NACCHO" in a large, bold, teal sans-serif font. To the left of the text is a vertical teal line. Below the main text, the full name "National Association of County & City Health Officials" is written in a smaller, teal sans-serif font, underlined.

VISION

Optimal health, equity, & security for all people in all communities

MISSION

NACCHO's mission is to improve the health of communities by strengthening and advocating for local health departments.

NACCHO

National Association of County & City Health Officials

VALUES

- NACCHO values **EQUITY** in all we do, with a special emphasis on social justice and the elimination of conditions leading to preventable, systemic differences in the distribution of illness and disease
- NACCHO strives for **EXCELLENCE** and the achievement of the highest quality in everything we touch
- NACCHO assures **RESPECT** for the dignity and diversity of individuals, groups, and communities
- NACCHO encourages **INNOVATION** and creativity in action to find practical solutions to problems
- NACCHO views **SCIENCE** as the foundation of evidence-based practice
- NACCHO ensures **INTEGRITY** through transparent, ethical, and accountable performance, resulting in trusted collaborations

THE NACCHO APPROACH

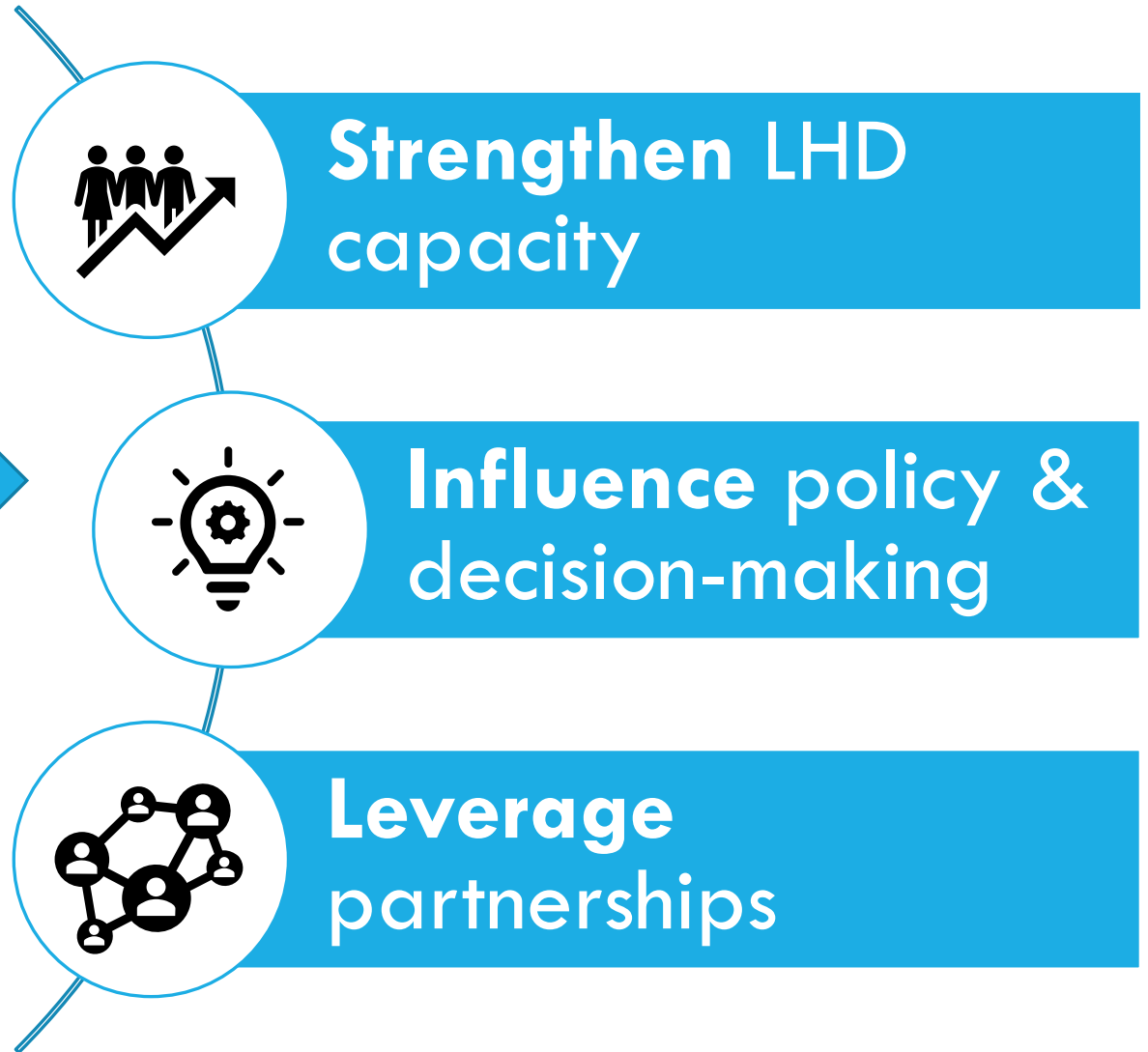
Grounded in our vision, mission, and core values, the NACCHO approach demonstrates who we are and how we impact our strategic focus areas.

Operating as a healthy, diverse, equitable, & resilient national 501c3 organization – with a strong infrastructure and engaged staff & members

We...

- lead
- include
- engage
- unify
- advocate
- convene
- research
- advise
- create
- educate
- demonstrate
- catalyze
- communicate
- collaborate
- support

To...



NACCHO STRATEGY FILTER QUESTIONS

WHAT DO WE SAY YES TO?

- ✓ The issue or opportunity is a priority for local public health departments across the country and impacts LHD capacity and/or the public's health
- ✓ There is a meaningful role for a national organization
- ✓ NACCHO is uniquely positioned to respond or engage; there is not another better suited organization to respond instead
- ✓ Our approach can be effectively applied
- ✓ We have or can build the staff capacity needed to be involved
- ✓ The cost can be covered adequately

roles we can play in priorities

- Lead** the effort, strategy, or action
- Collaborate** with other agencies with shared interest
- Connect** to others to share LHD perspectives about the need - yet have limited involvement in implementation
- Stay informed** but not take any additional action

STRATEGY
FOCUS AREAS
2023 -2025

1. LHD Vision & Voice

2. Infrastructure & Improvement

3. Impactful Engagement

4. Public Health Issue Emphasis

1. LHD Vision & Voice

Vision and Direction

- Modernizing
- Assimilating Broad System Recommendations

Communication

- LHD Role, Scope, Value
- Rebuilding Trust and Credibility

Laws and Governance

- Public Health Authority
- State-Level Policy
- State-based Advocacy
- Strong LHD Voice
- LHD Legal Capacity

2. Infrastructure and Improvement

Financing

- Adequate, sustainable, flexible funding
- Infrastructure funding

Workforce

- Workforce morale, mental health, rebuilding
- Diversity and practice-based skill development
- Staffing needs

Data Systems and Performance

- Data modernization
- Data sharing and collaboration
- Monitor infrastructure with shared measures
- Performance data and monitoring

Continuous Improvement

- Practice and Innovation
- Promote accountability
- Provide TA on CI/accreditation and pathways
- Improve operational excellence

3. Impactful Engagement

Partnerships: State and Local

- LHD state-level relations
- SACCHOs
- State/local relations
- Strong local partnerships

Partnerships: Tribal and National

- Sovereign Tribal Government support
- National partnerships reflective of local partnerships
- Strengthen national partnerships
- LHD engagement with federal agencies and national stakeholders

Local Health Departments and Constituencies

- NACCHO resources visibility
- Expand utilization of resources
- Input/engagement of all LHD staff
- Increase participation of LHDs
- Enhance regional connectivity and engagement

Community Engagement

- Supporting meaningful community engagement
- Community-based organizations

4. Public Health Issue Emphasis

Racial Equity and Addressing Systemic Racism

- Make it central to our work

Preparedness, Response, and Recovery

- Continual effort in response to ongoing emergencies, infectious disease and environmental threats

Opioid Epidemic and Substance Use Disorder

- Continue pre-pandemic focus and efforts to address

Additional Areas of Concern

- Community mental health
- Intentional injury and gun violence
- Climate Change